

WAAS CH <b>65723</b> <b>W34A</b>	APP CRS <b>337°</b>	Rwy Idg <b>3008</b> TDZE <b>526</b> Apt Elev <b>533</b>
--	------------------------	---

# RNAV (GPS) RWY 34

DEXTER RGNL (1B)

**Procedure NA at night. DME/DME RNP-0.3 NA. Use Bangor altimeter setting, when not received, use Augusta altimeter setting and increase all MDA 40 feet.**

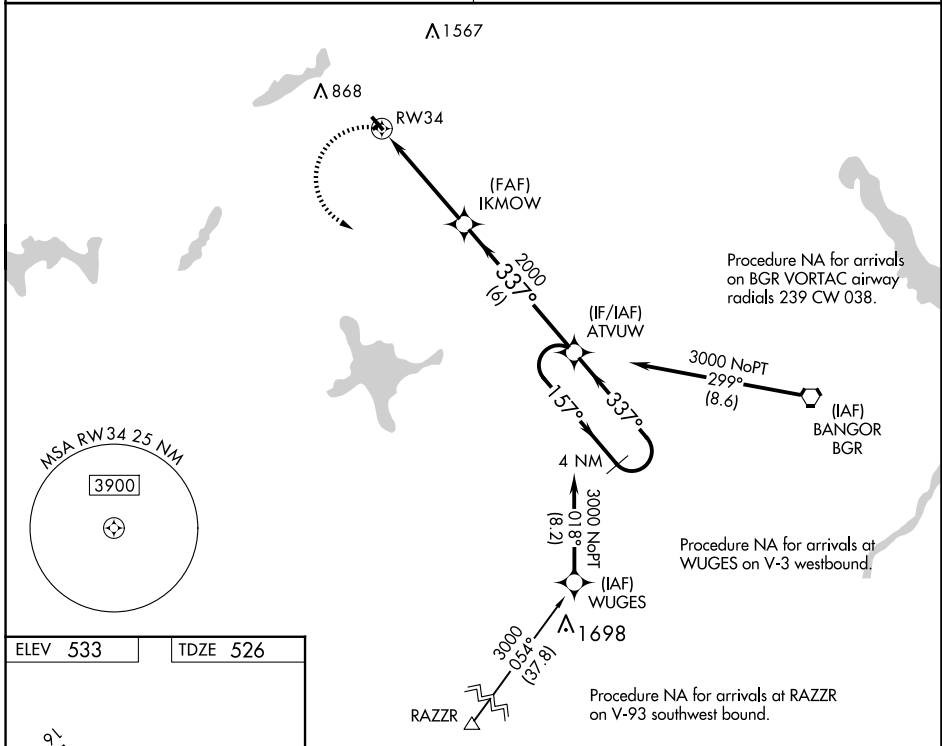
**Procedure NA for arrivals on BGR VORTAC airway radials 239 CW 038.**

**Procedure NA for arrivals at WUGES on V-3 westbound.**

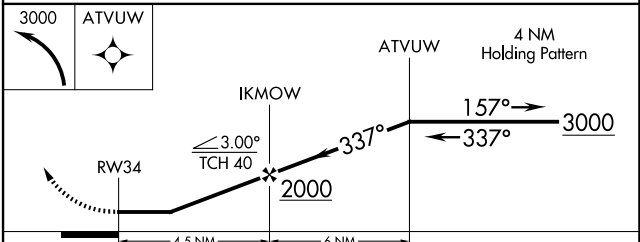
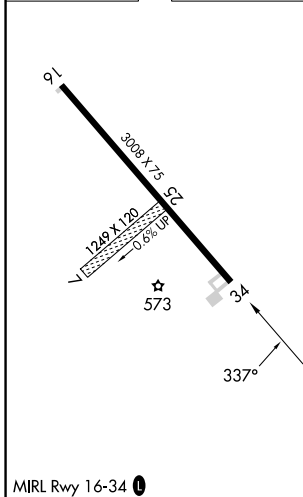
**Procedure NA for arrivals at RAZZR on V-93 southwest bound.**

**MISSED APPROACH: Climbing left turn to 3000 direct ATVUW and hold.**

BANGOR APP CON <b>118.925 239.3</b>	UNICOM <b>122.8 (CTAF) 1</b>
--	---------------------------------



ELEV 533	TDZE 526
----------	----------



CATEGORY	A	B	C	D
LP MDA	980-1	454 (500-1)	NA	
LNAV MDA	1140-1	614 (700-1)	NA	
CIRCLING	1220-1 687 (700-1)	1360-1¼ 827 (900-1¼)	NA	

NE-1, 15 MAY 2025 to 12 JUN 2025

NE-1, 15 MAY 2025 to 12 JUN 2025