

LOC/DME I-CUE <b>110.55</b> Chan <b>42 (Y)</b>	APP CRS <b>184°</b>	Rwy Idg TDZE <b>777</b> Apt Elev <b>777</b>	<b>5502</b>
--	------------------------	---	-------------

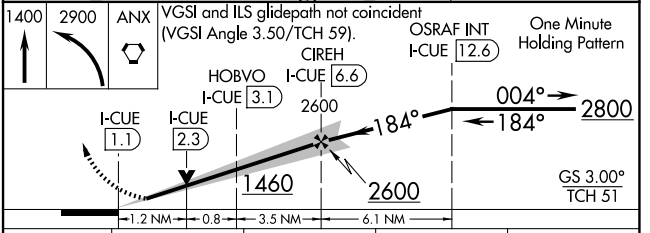
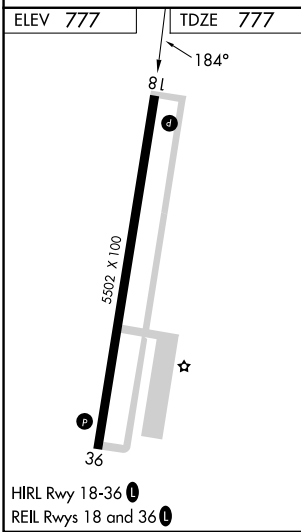
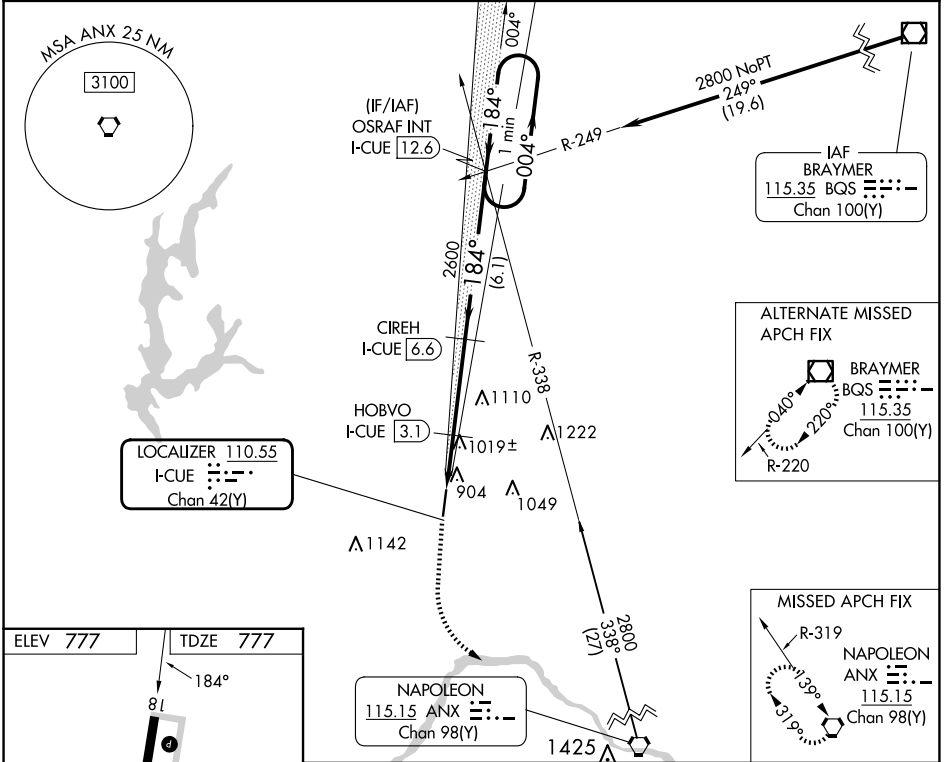
# ILS or LOC/DME RWY 18

MIDWEST NTL AIR CENTER (GPH)

**NA** Obtain local altimeter setting on CTAf; when not received use Kansas City Intl altimeter setting and increase DA 79 feet and all visibilities ¼ mile; increase all MDAs 80 feet, and Circling visibility Cat C ¼ mile. Autopilot coupled approach NA below 960.

**MISSED APPROACH:** Climb to 1400 then climbing left turn to 2900 direct ANX VORTAC and hold.

AWOS-3T <b>120.275</b>	KANSAS CITY APP CON <b>118.4 307.35</b>	CLNC DEL <b>118.2</b>	UNICOM <b>122.7 (CTAF)</b>
---------------------------	--	--------------------------	-------------------------------



CATEGORY	A	B	C	D
S-ILS 18	977-¾ 200 (200-¾)			NA
S-LOC 18	1280-1	503 (600-1)	1280-1½ 503 (600-1½)	NA
CIRCLING	1300-1 523 (600-1)	1320-1 543 (600-1)	1360-1½ 583 (600-1½)	NA

NC-3, 15 MAY 2025 to 12 JUN 2025

NC-3, 15 MAY 2025 to 12 JUN 2025