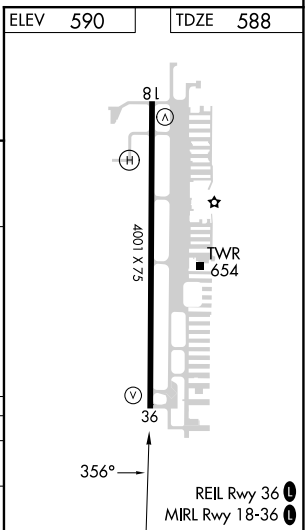
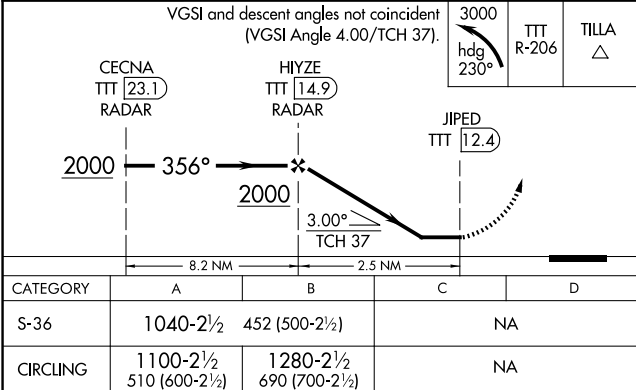
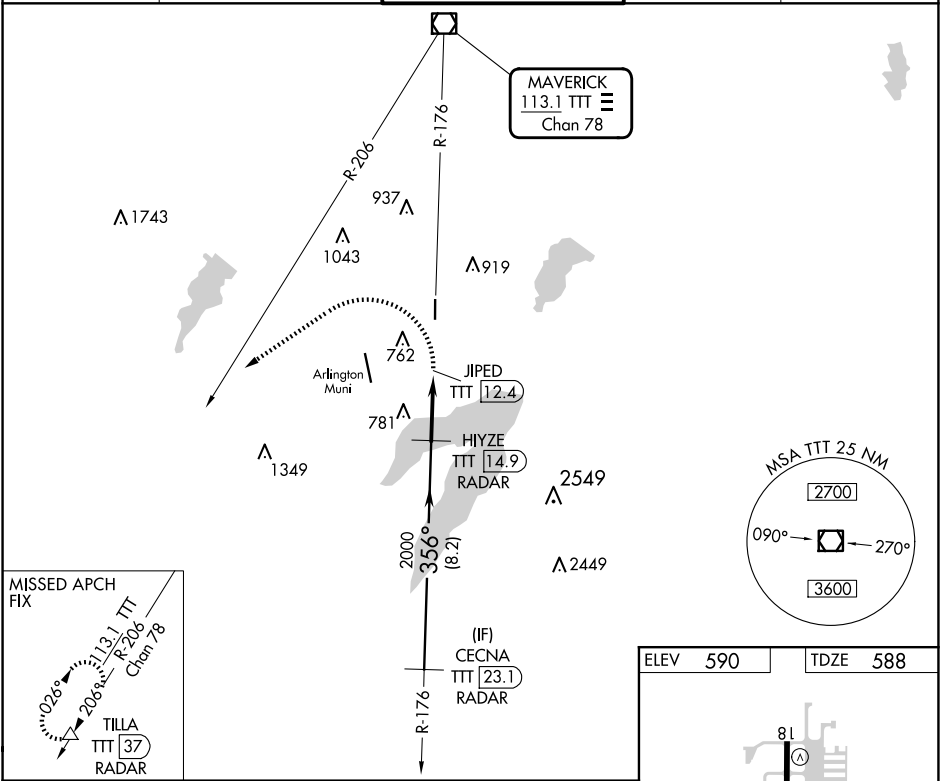


VOR/DME TTT 113.1 Chan 78	APP CRS 356°	Rwy Idg 4001 TDZE 588 Apt Elev 590
-----------------------------------------------	------------------------	---------------------------------------------------------------

VOR RWY 36

GRAND PRAIRIE MUNI (GPM)

RADAR and DME required.		MISSED APPROACH: Climbing left turn to 3000 on heading 230° and TTT VOR/DME R-206 to TILLA/37 DME/RADAR and hold.		
Circling Rwy 18 NA at night.		GRAND PRAIRIE TOWER * 128.55 (CTAF)	GND CON 121.15	UNICOM 123.075



SC-2, 15 MAY 2025 to 12 JUN 2025

SC-2, 15 MAY 2025 to 12 JUN 2025