

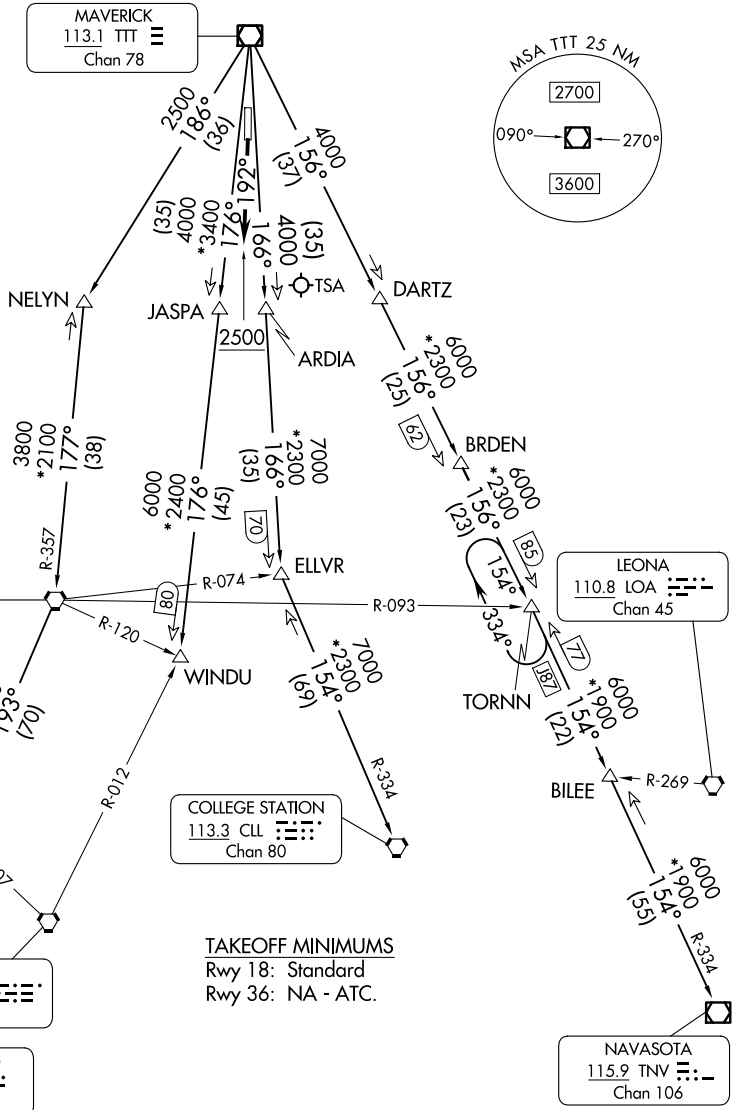
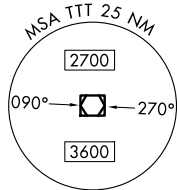
JOE POOL SEVEN DEPARTURE

LONE STAR DEP CON
135.975 379.9
GND CON
121.15
GRAND PRAIRIE TOWER ★
128.55 (CTAF)

RADAR and DME required.

**TOP ALTITUDE:
ASSIGNED BY ATC**

MAVERICK
113.1 TTT
Chan 78



COLLEGE STATION
113.3 CLL
Chan 80

TAKEOFF MINIMUMS
Rwy 18: Standard
Rwy 36: NA - ATC.

(CONTINUED ON FOLLOWING PAGE)

NOTE: Chart not to scale.

SC-2, 15 MAY 2025 to 12 JUN 2025

SC-2, 15 MAY 2025 to 12 JUN 2025

JOE POOL SEVEN DEPARTURE