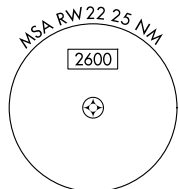


APP CRS	Rwy Idg	N/A
216°	TDZE	N/A
	Apt Elev	421

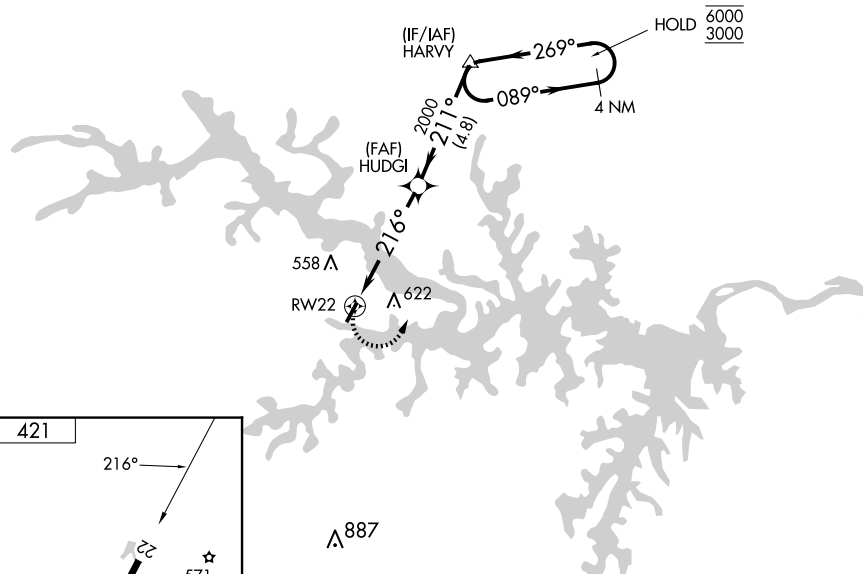
RNAV (GPS)-B

LAKE COUNTRY RGNL (W63)

RNP APCH - GPS.		MISSED APPROACH: Climbing left turn to 3000 direct HARVY and hold.
<p>▼ Rwy 22 helicopter visibility reduction below 1 SM NA.</p> <p>▲ Procedure NA at night. When local altimeter setting not received, use Chase City altimeter setting and increase all MDA 40 feet.</p>		
AWOS-3 118.225	WASHINGTON CENTER 118.75 377.1	CTAF 122.9

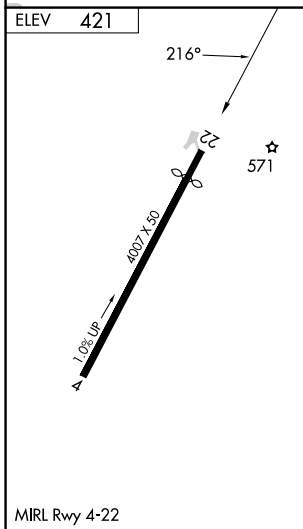


NoPT for arrival at HARVY on V3 southwest bound and on V266 westbound.



NE-3, 15 MAY 2025 to 12 JUN 2025

NE-3, 15 MAY 2025 to 12 JUN 2025



3000	HARVY	Visual Segment - Obstacles.										
4.9 NM	4.8 NM	4 NM Holding Pattern										
<table border="1"> <tr> <th>CATEGORY</th> <td>A</td> <td>B</td> <td>C</td> <td>D</td> </tr> <tr> <td>C CIRCLING</td> <td>1440-3</td> <td>1019 (1100-3)</td> <td colspan="2">NA</td> </tr> </table>	CATEGORY	A	B	C	D	C CIRCLING	1440-3	1019 (1100-3)	NA			
CATEGORY	A	B	C	D								
C CIRCLING	1440-3	1019 (1100-3)	NA									