

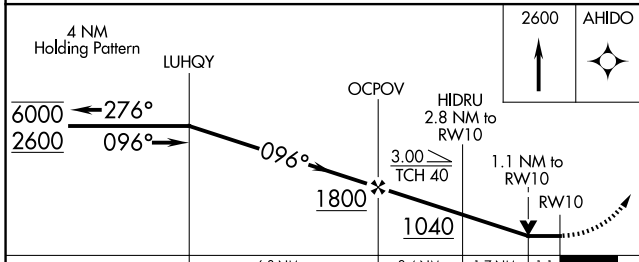
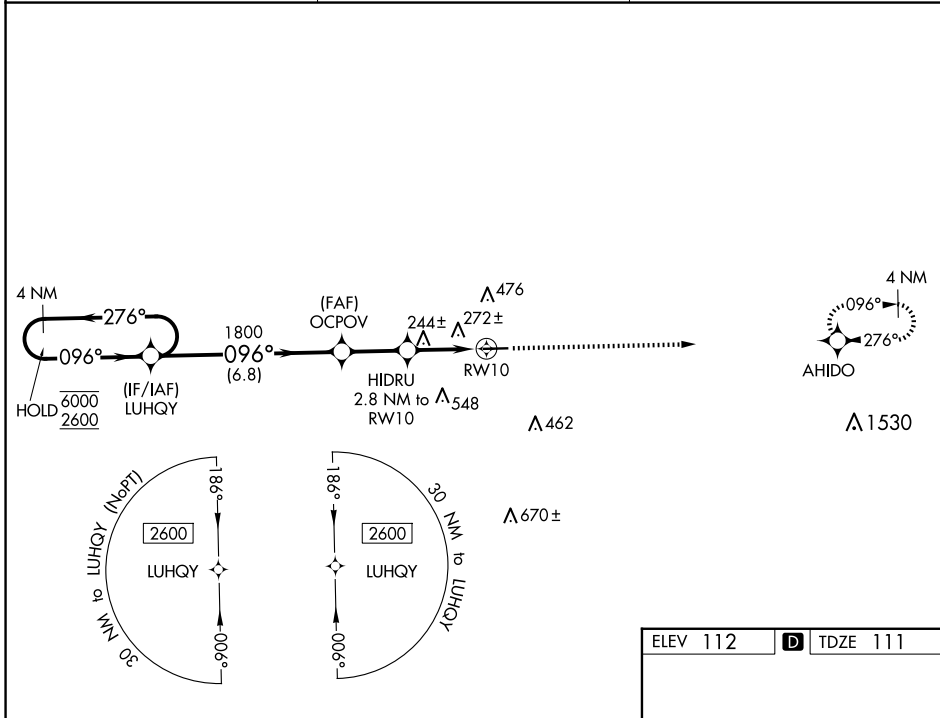
WAAS CH 45914 W10A	APP CRS 096°	Rwy Idg TDZE Apt Elev	4651 111 112
--	------------------------	-----------------------------	---

RNAV (GPS) RWY 10

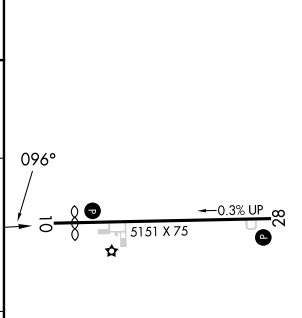
CLAXTON-EVANS COUNTY (C'WV)

RNP APCH - GPS.	MISSED APPROACH: Climb to 2600 direct AHIDO and hold.
▼ ▲ Rwy 10 helicopter visibility reduction below 3/4 SM NA.	

AWOS-3 120.075	JACKSONVILLE CENTER 132.925 363.2	UNICOM 122.8 (CTAF) 1
--------------------------	---	--



ELEV 112	D TDZE 111
----------	-------------------



CATEGORY	A	B	C	D
LP MDA	500-1	389 (400-1)	500-1 1/8	389 (400-1 1/8)
LNAV MDA	540-1	429 (500-1)	540-1 1/4	429 (500-1 1/4)
C CIRCLING	580-1 468 (500-1)	780-1 668 (700-1)	860-2 1/4 748 (800-2 1/4)	860-2 1/2 748 (800-2 1/2)

MIRL Rwy 10-28 **1**
REIL Rwys 10 and 28 **1**

SE-4, 15 MAY 2025 to 12 JUN 2025

SE-4, 15 MAY 2025 to 12 JUN 2025