

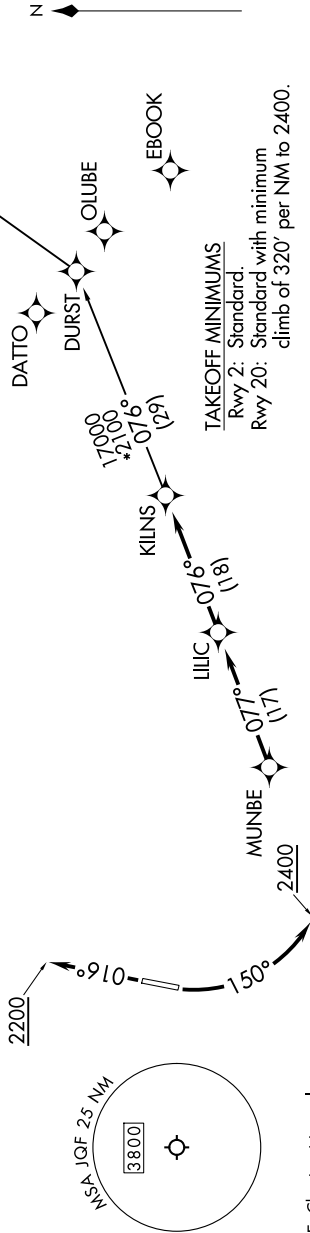
# KILNS FIVE DEPARTURE (RNAV)

SE-2, 15 MAY 2025 to 12 JUN 2025

CHARLOTTE DEP CON  
128.325 307.8  
ATIS  
133.675  
CLNC DEL  
118.55  
CLNC DEL (when twr closed)  
127.25  
GND CON  
121.85  
CONCORD TOWER \*  
134.65 (CTAF)  
UNICOM  
122.95

RNAV 1 - DME/DME/IRU or GPS.  
RADAR required.

NOTE: For turbojets only.  
NOTE: Transponder code will be issued via PDC or Charlotte CLNC DEL.  
NOTE: Upon reaching 10000 MSL, accelerate to and maintain 280K, if unable advise ATC.  
NOTE: If unable to accept climb rates, advise ATC on initial contact.



NOTE: Chart not to scale.

## DEPARTURE ROUTE DESCRIPTION

**TAKEOFF RUNWAY 2:** Climb on heading 016° to 2200, then on heading assigned by ATC, thence. . . .  
**TAKEOFF RUNWAY 20:** Climbing left turn heading 150° to 2400, then on heading assigned by ATC, thence. . . .

. . . on RADAR vectors to MUNBE, then on depicted route to KILNS, then on AUDII transition. Maintain 3000. Expect clearance to filed altitude within 10 minutes after departure.

AUDIII TRANSITION (KILNS5.AUDIII)

# KILNS FIVE DEPARTURE (RNAV)

SE-2, 15 MAY 2025 to 12 JUN 2025