

WAAS CH 78024 W09A	APP CRS 092°	Rwy Idg 4300 TDZE 22 Apt Elev 22
--	------------------------	---

RNAV (GPS) RWY 9R

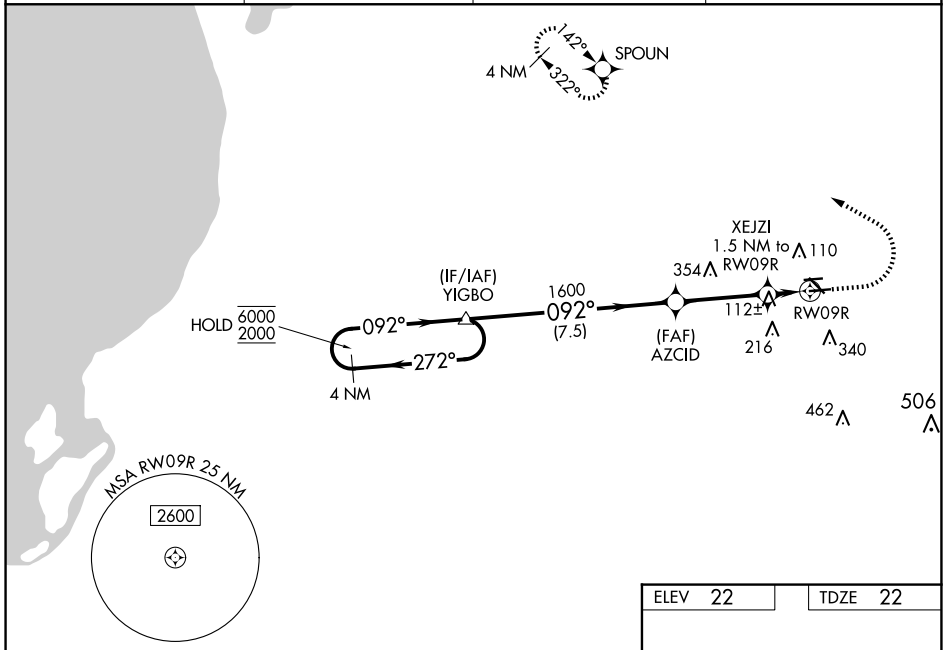
NORTH PALM BEACH COUNTY GENERAL AVIATION (F45)

RNP APCH - GPS.

⚠ Circling NA to Rwy 09L and 27R. For uncompensated Baro-VNAV systems, LNAV/VNAV NA below -15°C or above 54°C. Rwy 9R helicopter visibility reduction below ¾ SM NA.

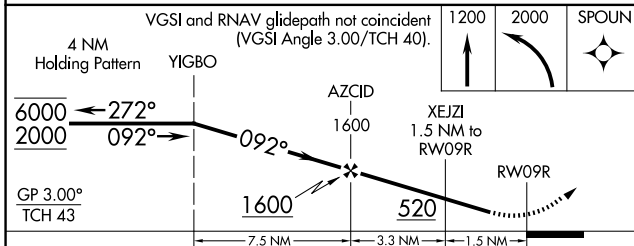
MISSED APPROACH: Climb to 1200 then climbing left turn to 2000 direct SPOUN and hold.

AWOS-3 119.975	PALM BEACH APP CON 128.3 317.4	CLNC DEL 120.825	UNICOM 123.075 (CTAF) 0
--------------------------	--	----------------------------	-----------------------------------

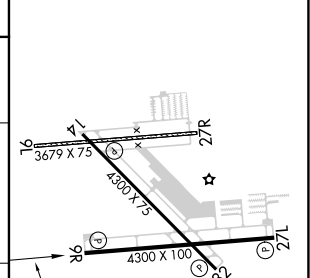


SE-3, 15 MAY 2025 to 12 JUN 2025

SE-3, 15 MAY 2025 to 12 JUN 2025



ELEV 22	TDZE 22
---------	---------



CATEGORY	A	B	C	D
LPV DA		272-7/8 250 (300-7/8)		
LNAV/VNAV DA		403-11/8 381 (400-11/8)		
LNAV MDA	420-1	398 (400-1)	420-11/8	398 (400-11/8)
C CIRCLING	440-1 418 (500-1)	480-1 458 (500-1)	640-2 618 (700-2)	720-21/4 698 (700-21/4)

MIRL Rwy 9R-27L and 14-32 **0**
REL Rwy 9R, 14, 27L and 32 **0**