

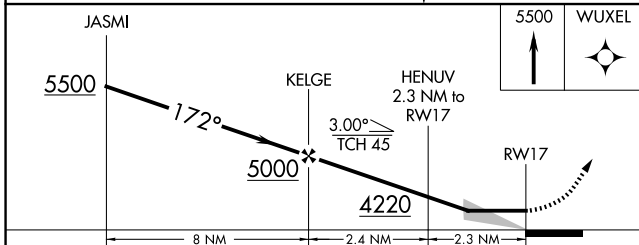
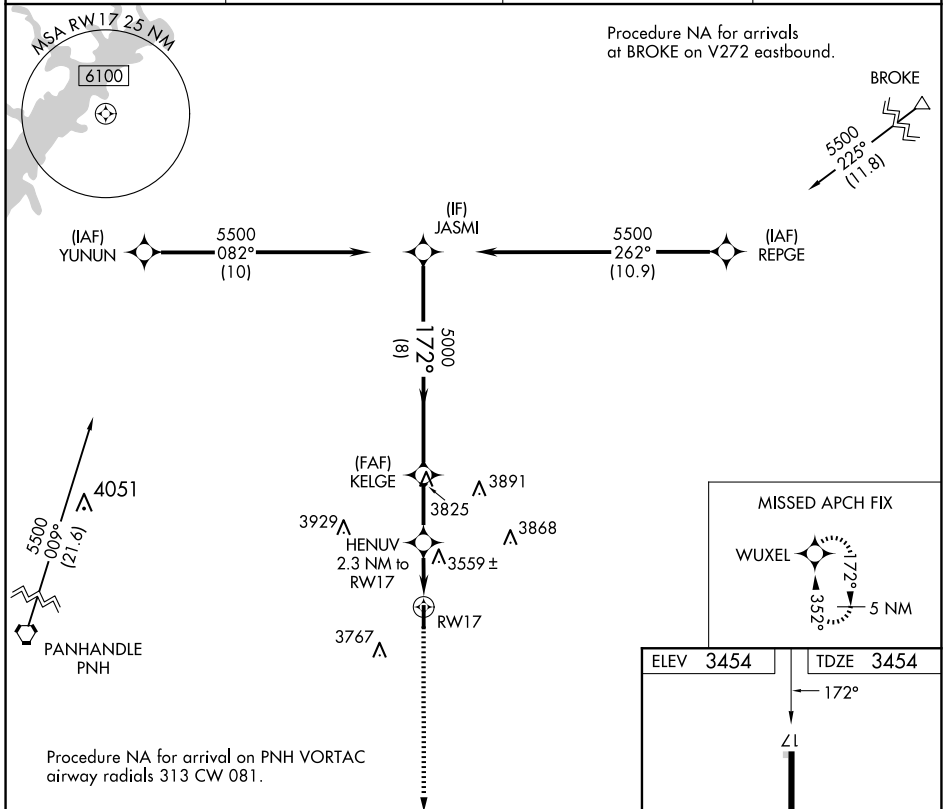
APP CRS	Rwy Idg	<b>4404</b>
<b>172°</b>	TDZE	<b>3454</b>
	Apt Elev	<b>3454</b>

# RNAV (GPS) RWY 17

PANHANDLE-CARSON COUNTY (T45)

RNP APCH - GPS.	MISSED APPROACH: Climb to 5500 direct WUXEL and hold.
<p><b>V</b> Use Rick Husband Amarillo Intl altimeter setting; when not received, use Borger altimeter setting and increase all MDA 40 feet.</p> <p><b>NA</b></p>	

AMA ASOS <b>118.85 350.3</b>	AMARILLO APP CON* <b>119.5 307.0</b>	UNICOM <b>122.7 (CTAF)</b>	<b>123.5</b> <b>0</b>
---------------------------------	---	-------------------------------	-----------------------



MISSED APCH FIX

WUXEL

5500  
2255  
(11.8)

ELEV 3454 | TDZE 3454

172°

4404 x 60

35

MIRL Rwy 17-35 **0**

CATEGORY	A	B	C	D
LNAV MDA	3900-1	446 (500-1)	3900-1 $\frac{1}{8}$ 446 (500-1 $\frac{1}{8}$ )	NA
<b>C</b> CIRCLING	4140-1	686 (700-1)	4140-2 686 (700-2)	NA

SC-2, 15 MAY 2025 to 12 JUN 2025

SC-2, 15 MAY 2025 to 12 JUN 2025