

APP CRS	Rwy Idg	4000
173°	TDZE	915
	Apt Elev	915

RNAV (GPS) RWY 17

LAWRENCE SMITH MEML (L.R.Y)

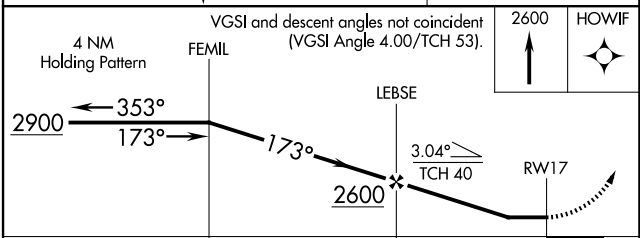
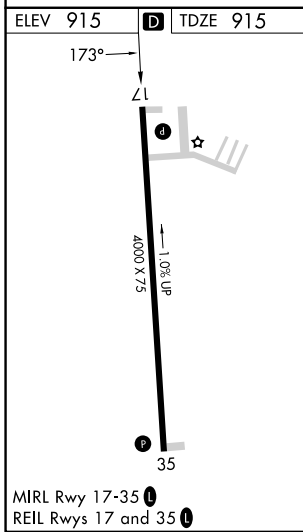
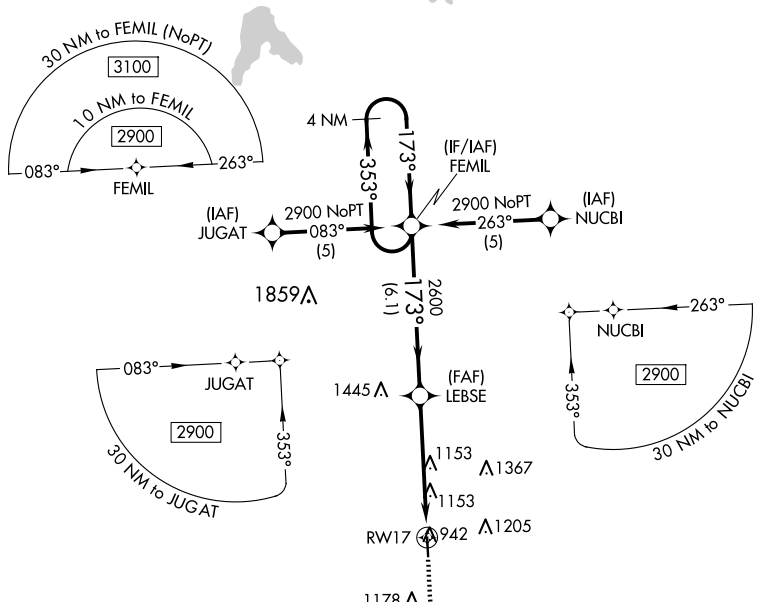
RNP APCH.
 ⚠ When local altimeter setting not received, use Kansas City Downtown/Wheeler Fld altimeter setting: increase all MDAs 100 feet and visibility Cat C ¼ mile. Procedure NA at night. Rwy 17 helicopter visibility reduction below 1 SM NA.

MISSED APPROACH: Climb to 2600 direct HOWIF and hold.

AWOS-3PT
119.975

KANSAS CITY CENTER
125.55 327.0

UNICOM
123.0 (CTAF) 0



CATEGORY	A	B	C	D
LNAV MDA	1420-1	505 (600-1)	1420-1½ 505 (600-1½)	NA
CIRCLING	1420-1 505 (600-1)	1460-1 545 (600-1)	1520-1¾ 605 (700-1¾)	NA

NC-3, 15 MAY 2025 to 12 JUN 2025

NC-3, 15 MAY 2025 to 12 JUN 2025