

RNAV (GPS) Z RWY 2

SANDPOINT (SZT)

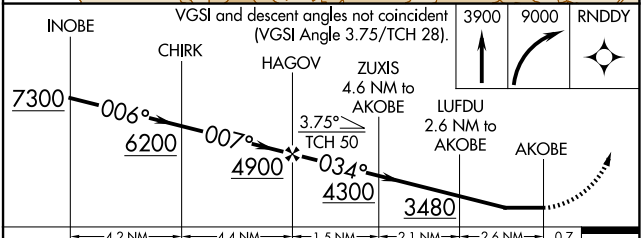
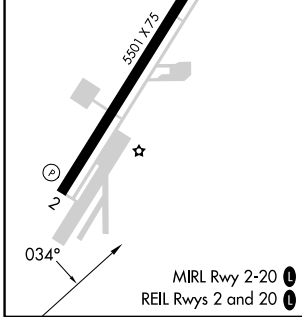
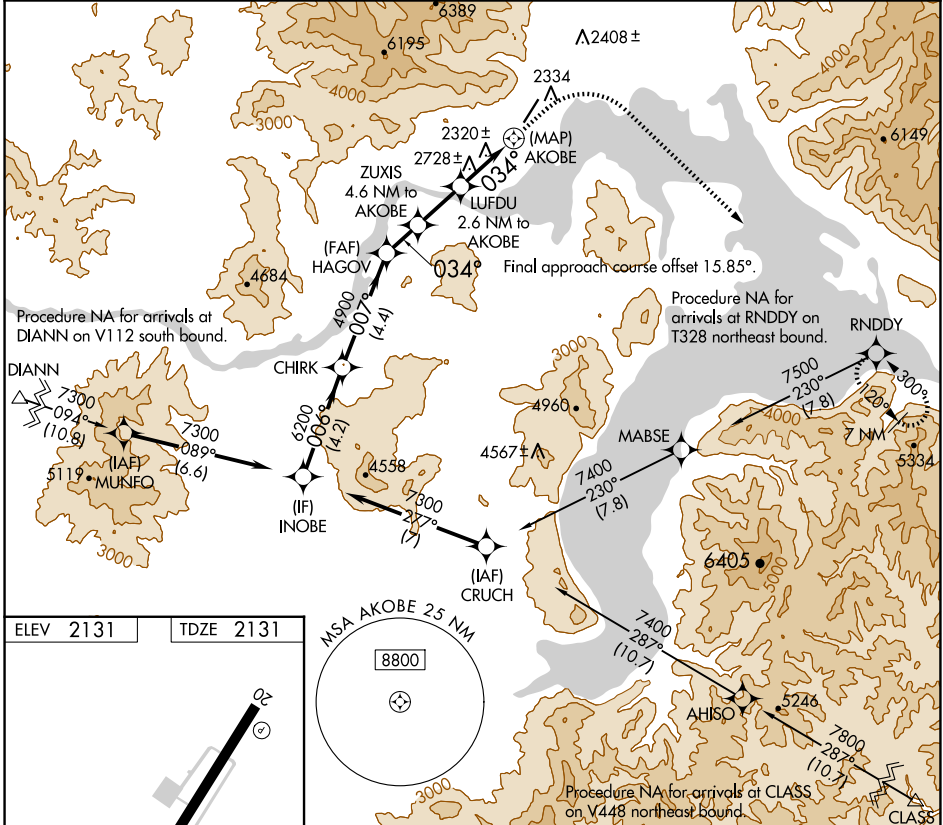
WAAS CH 63146 W02A	APP CRS 034°	Rwy Idg TDZE Apt Elev	5501 2131 2131
---------------------------------	------------------------	-----------------------------	---

RNP APCH - GPS.

⚠ Rwy 2 helicopter visibility reduction below 1 SM NA.
Procedure NA at night.

MISSED APPROACH: Climb to 3900 then climbing right turn to 9000 direct RNDY and hold, continue climb-in-hold to 9000.
*Missed approach requires minimum climb of 350 feet per NM to 6500; If unable to meet climb gradient, see RNAV (GPS)-B.

AWOS-2 135.425	SEATTLE CENTER 123.95 290.55	UNICOM 122.7 (CTAF) 0
--------------------------	--	---------------------------------



CATEGORY	A	B	C	D
LP MDA*	3100-1¼ 969 (1000-1¼)	3100-1½ 969 (1000-1½)	3100-3 969 (1000-3)	NA

NW-1, 15 MAY 2025 to 12 JUN 2025

NW-1, 15 MAY 2025 to 12 JUN 2025