

APP CRS	Rwy Idg	<b>5501</b>
<b>198°</b>	TDZE	<b>2131</b>
	Apt Elev	<b>2131</b>

# RNAV (GPS) Y RWY 20

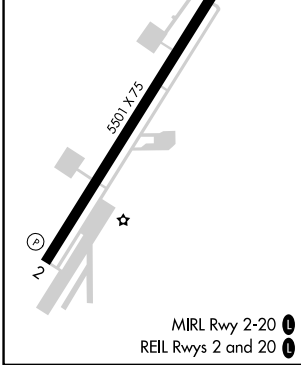
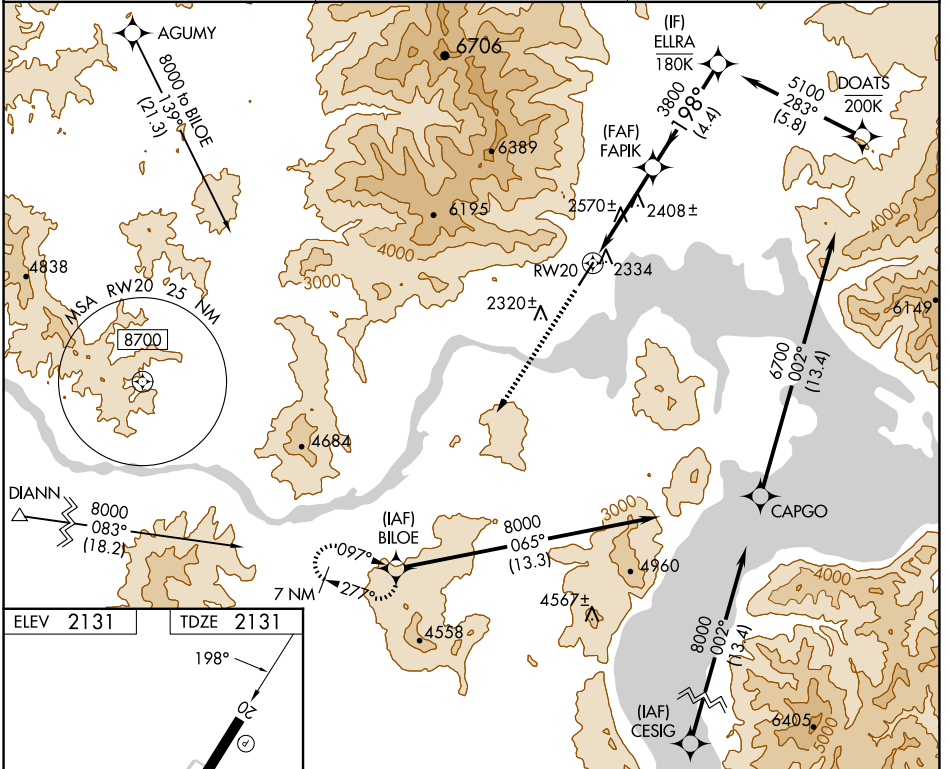
SANDPOINT (SZT)

RNP APCH.

**⚠** Circling NA west of Rwy 2-20. Rwy 20 helicopter visibility reduction below 3/4 SM NA. VDP NA with Deer Park altimeter setting. When local altimeter not received, use Deer Park altimeter setting and increase all MDA 120 feet.

**⚠** MISSED APPROACH: Climb to 6600 direct BILOE and hold, continue climb in hold to 6600.

AWOS-2 <b>135.425</b>	SEATTLE CENTER <b>123.95 290.55</b>	UNICOM <b>122.7 (CTAF)</b> <b>①</b>
--------------------------	--	--



6600 BILOE	VGSI and descent angles not coincident (VGSI Angle 3.75/TCH 50).			ELLRA															
3800	FAPIK			5100															
3.1 NM to RWY 20		0.9 NM		4.4 NM															
3.77° TCH 55	198°																		
<table border="1"> <thead> <tr> <th>CATEGORY</th> <th>A</th> <th>B</th> <th>C</th> <th>D</th> </tr> </thead> <tbody> <tr> <td>LNAV MDA</td> <td>3400-1¼ 1269 (1300-1¼)</td> <td>3400-1½ 1269 (1300-1½)</td> <td>3400-3 1269 (1300-3)</td> <td>NA</td> </tr> <tr> <td><b>ⓐ</b> CIRCLING</td> <td>3400-1¼ 1269 (1300-1¼)</td> <td>3400-1½ 1269 (1300-1½)</td> <td>3400-3 1269 (1300-3)</td> <td>NA</td> </tr> </tbody> </table>					CATEGORY	A	B	C	D	LNAV MDA	3400-1¼ 1269 (1300-1¼)	3400-1½ 1269 (1300-1½)	3400-3 1269 (1300-3)	NA	<b>ⓐ</b> CIRCLING	3400-1¼ 1269 (1300-1¼)	3400-1½ 1269 (1300-1½)	3400-3 1269 (1300-3)	NA
CATEGORY	A	B	C	D															
LNAV MDA	3400-1¼ 1269 (1300-1¼)	3400-1½ 1269 (1300-1½)	3400-3 1269 (1300-3)	NA															
<b>ⓐ</b> CIRCLING	3400-1¼ 1269 (1300-1¼)	3400-1½ 1269 (1300-1½)	3400-3 1269 (1300-3)	NA															

NW-1, 15 MAY 2025 to 12 JUN 2025

NW-1, 15 MAY 2025 to 12 JUN 2025