

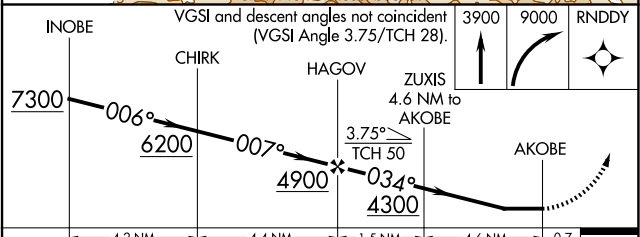
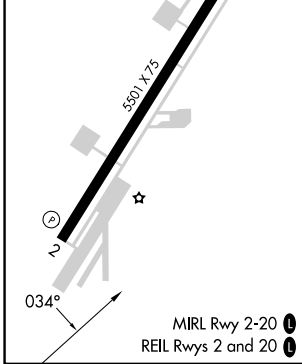
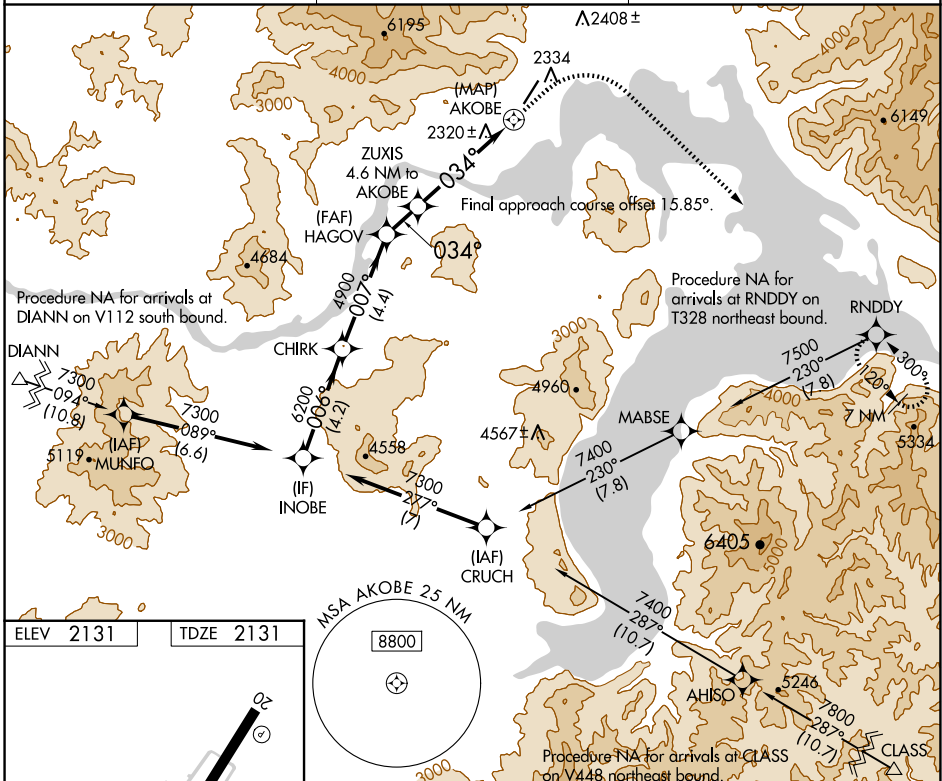
APP CRS	Rwy Idg	5501
034°	TDZE	2131
	Apt Elev	2131

RNAV (GPS) Y RWY 2

SANDPOINT (SZT)

RNP APCH - GPS.	MISSED APPROACH: Climb to 3900 then climbing right turn to 9000 direct RNDDDY and hold, continue climb-in-hold to 9000. *Missed approach requires minimum climb of 310 feet per NM to 8100; If unable to meet climb gradient, see RNAV (GPS)-B.
<p>▼ Circling NA west of Rwy 2-20. Straight-in Rwy 2 NA at night, Circling Rwy 2 NA at night. Rwy 2 helicopter visibility reduction below 1 SM NA.</p>	

AWOS-2 135.425	SEATTLE CENTER 123.95 290.55	UNICOM 122.7 (CTAF) 0
--------------------------	--	---------------------------------



CATEGORY	A	B	C	D
LNAV MDA*	3560-1¼ 1429 (1500-1¼)	3560-1½ 1429 (1500-1½)	3560-3 1429 (1500-3)	NA
CIRCLING	3560-1¼ 1429 (1500-1¼)	3560-1½ 1429 (1500-1½)	3560-3 1429 (1500-3)	NA

NW-1, 15 MAY 2025 to 12 JUN 2025

NW-1, 15 MAY 2025 to 12 JUN 2025