

VORTAC TUL <b>114.4</b> Chan <b>91</b>	APP CRS <b>060°</b>	Rwy Idg TDZE Apt Elev <b>N/A</b> <b>N/A</b> <b>733</b>
--	------------------------	---

# VOR/DME-B

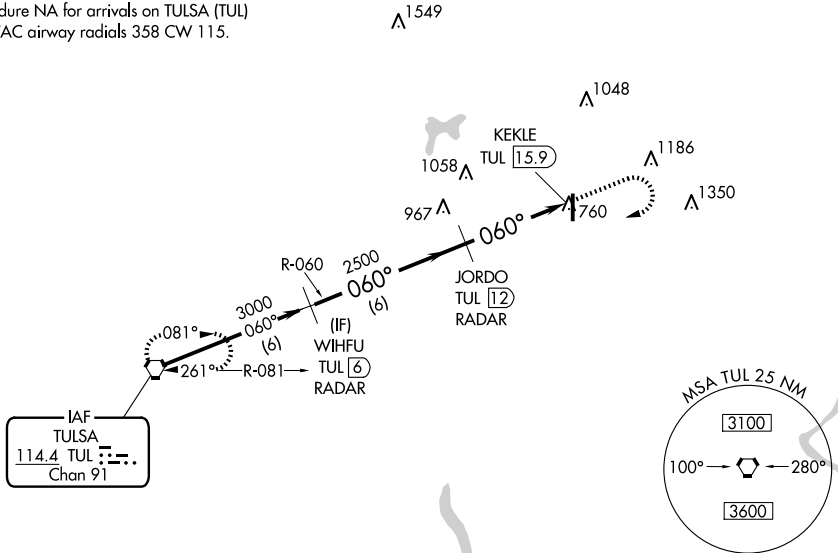
CLAREMORE RGNL (GCM)

**▽** If local altimeter setting not received, use Tulsa Intl altimeter setting and increase all MDAs 60 feet.

MISSED APPROACH: Climb to 2500 then climbing right turn to 3000 direct TUL VORTAC and hold.

AWOS-3PT <b>119.925</b>	TULSA APP CON <b>119.1 360.825</b>	UNICOM <b>122.7 (CTAF) 0</b>
----------------------------	---------------------------------------	---------------------------------

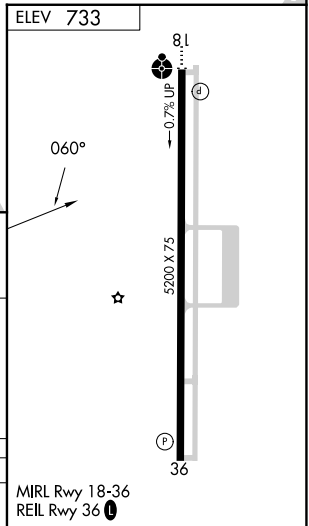
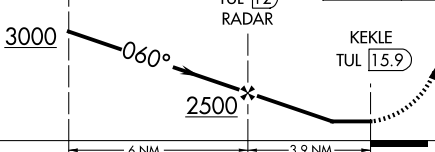
Procedure NA for arrivals on TULSA (TUL)  
VORTAC airway radials 358 CW 115.



SC-1, 15 MAY 2025 to 12 JUN 2025

SC-1, 15 MAY 2025 to 12 JUN 2025

Procedure Turn NA	WIHFU TUL (6) RADAR	JORDO TUL (12) RADAR	2500	3000	TUL
-------------------	---------------------	----------------------	------	------	-----



CATEGORY	A	B	C	D
<b>C</b> CIRCLING	1260-1	527 (600-1)	1380-1 <sup>3</sup> / <sub>4</sub> 647 (700-1 <sup>3</sup> / <sub>4</sub> )	NA

MIRL Rwy 18-36  
REIL Rwy 36 0