

WAAS CH <b>99714</b> <b>W36A</b>	APP CRS <b>355°</b>	Rwy Idg TDZE Apt Elev <b>5200</b> <b>733</b> <b>733</b>
--	------------------------	--

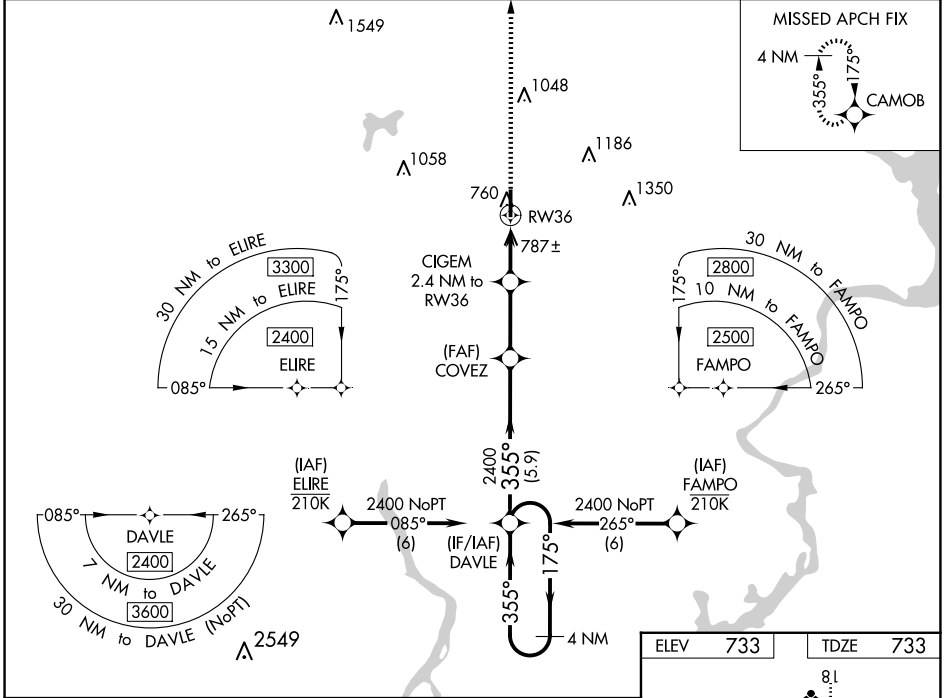
# RNAV (GPS) RWY 36

CLAREMORE RGNL (GCM)

▼ For uncompensated Baro-VNAV systems, LNAV/VNAV NA below -16°C (4°F) or above 54°C (130°F). DME/DME RNP-0.3 NA.

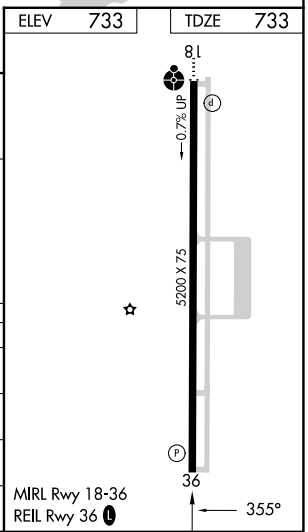
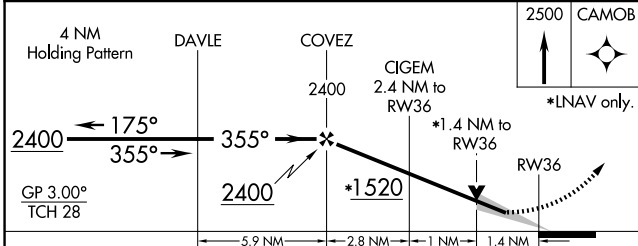
MISSED APPROACH: Climb to 2500 direct CAMOB and hold.

AWOS-3PT <b>119.925</b>	TULSA APP CON <b>119.1 360.825</b>	UNICOM <b>122.7 (CTAF) 0</b>
----------------------------	---------------------------------------	---------------------------------



SC-1, 15 MAY 2025 to 12 JUN 2025

SC-1, 15 MAY 2025 to 12 JUN 2025



CATEGORY	A	B	C	D
LPV DA	983-3/4	250 (300-3/4)		NA
LNAV/VNAV DA	983-3/4	250 (300-3/4)		NA
LNAV MDA	1040-1	307 (400-1)	1040-1 3/8 307 (400-1 3/8)	NA
CIRCLING	1260-1	527 (600-1)	1380-1 3/4 647 (700-1 3/4)	NA