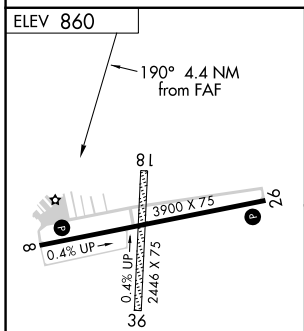
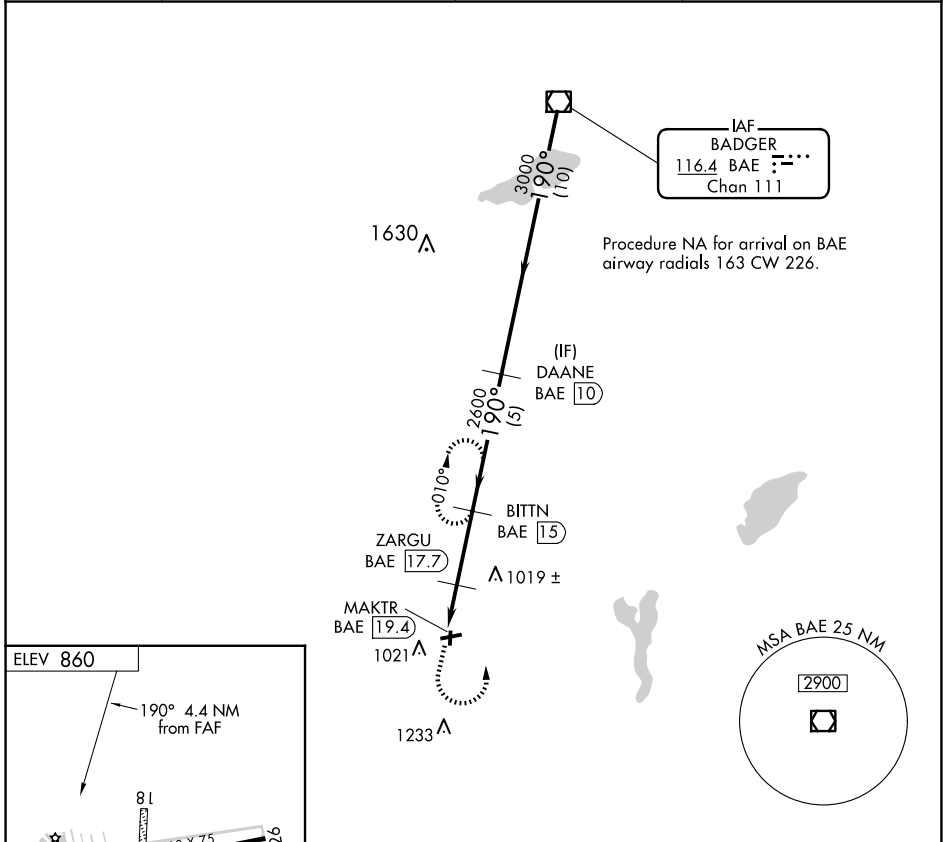


VOR/DME BAE 116.4 Chan 111	APP CRS 190°	Rwy Idg TDZE Apt Elev	N/A N/A 860
--	------------------------	-----------------------------	--

VOR/DME-A
EAST TROY MUNI (57C)

<p>▼ Circling NA to Rwys 18 and 36.</p>	<p>MISSED APPROACH: Climb to 2700 then left turn on BAE VOR/DME R-190 to BITTN/15 DME and hold.</p>
--	---

AWOS-3PT 118.125	MILWAUKEE APP CON 125.35 307.0	GCO 121.725	UNICOM 123.0 (CTAF) 📞
----------------------------	--	-----------------------	--



2700	BAE R-190	BITTN BAE 15	DAANE BAE 10	BAE VOR/DME
	ZARGU BAE 17.7	BITTN BAE 15	3000	3000
	MAKTR BAE 19.4	2600	190°	
	1800	2600	3000	
	1.7 NM	2.7 NM	5 NM	10 NM
CATEGORY	A	B	C	D
CIRCLING	1340-1	480 (500-1)	NA	

MIRL Rwy 8-26 **📞**
REIL Rwys 8 and 26 **📞**