

WAAS CH 53318 W33A	APP CRS 327°	Rwy Idg 4999 TDZE 1815 Apt Elev 1815
--	------------------------	---

RNAV (GPS) RWY 33

MERCER COUNTY RGNL (HZE)

RNP APCH - GPS.

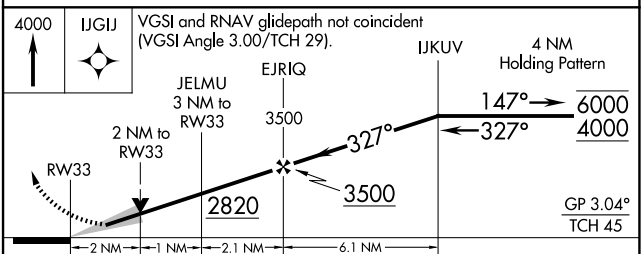
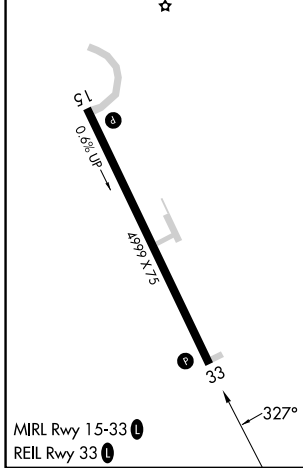
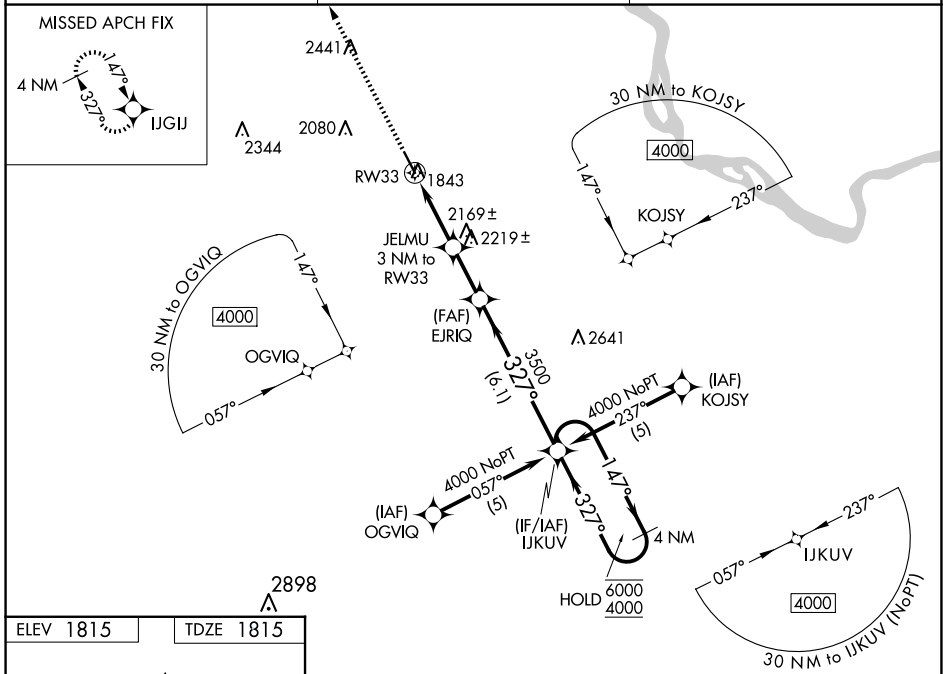
▽
△ For uncompensated Baro-VNAV systems, LNAV/VNAV NA below -18°C or above 54°C.

MISSED APPROACH: Climb to 4000 direct IJGIJ and hold.

AWOS-3PT
118.675

MINNEAPOLIS CENTER
124.25 236.825

UNICOM
122.8 (CTAF)



CATEGORY	A	B	C	D
LPV DA	2193-1 378 (400-1)			NA
LNAV/VNAV DA	2353-1½ 538 (600-1½)			NA
LNAV MDA	2480-1	665 (700-1)	2480-1⅞ 665 (700-1⅞)	NA
C CIRCLING	2480-1	665 (700-1)	2480-1⅞ 665 (700-1⅞)	NA

NC-1, 15 MAY 2025 to 12 JUN 2025

NC-1, 15 MAY 2025 to 12 JUN 2025