

| | | | |
|--|------------------------|-----------------------------|---|
| WAAS CH 48818 W15A | APP CRS 147° | Rwy Idg TDZE Apt Elev | 4999 1787 1815 |
|--|------------------------|-----------------------------|---|

RNAV (GPS) RWY 15

MERCER COUNTY RGNL (HZE)

RNP APCH - GPS.

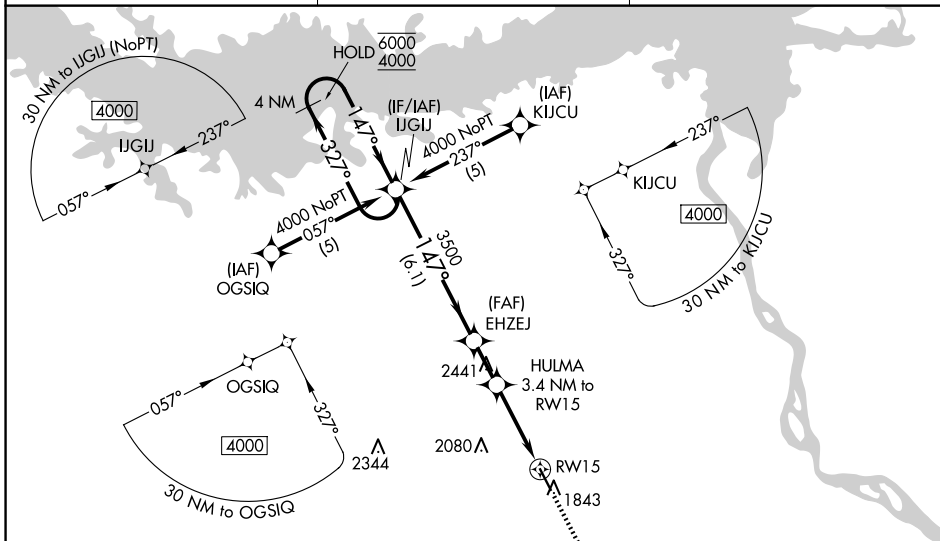
⚠ For uncompensated Baro-VNAV systems, LNAV/VNAV NA below -18°C or above 54°C.

MISSED APPROACH: Climb to 4000 direct IJKUV and hold.

AWOS-3PT
118.675

MINNEAPOLIS CENTER
124.25 236.825

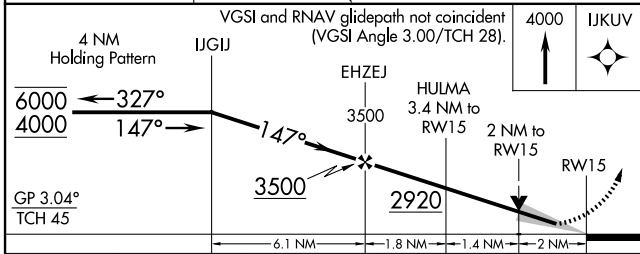
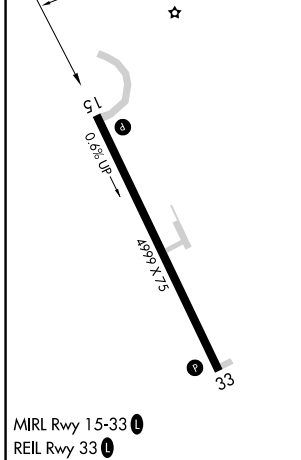
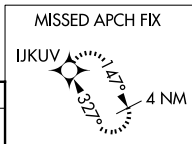
UNICOM
122.8 (CTAF) ①



NC-1, 15 MAY 2025 to 12 JUN 2025

NC-1, 15 MAY 2025 to 12 JUN 2025

| | |
|-----------|-----------|
| ELEV 1815 | TDZE 1787 |
|-----------|-----------|



| CATEGORY | A | B | C | D |
|-------------------|---|-------------|--|----|
| LPV DA | 2165-1 378 (400-1) | | | NA |
| LNAV/VNAV DA | 2231-1 $\frac{3}{8}$ 444 (500-1 $\frac{3}{8}$) | | | NA |
| LNAV MDA | 2460-1 | 673 (700-1) | 2460-1 $\frac{7}{8}$ 673 (700-1 $\frac{7}{8}$) | NA |
| C CIRCLING | 2460-1 | 645 (700-1) | 2480-1 $\frac{7}{8}$ 665 (700-1 $\frac{7}{8}$) | NA |