

APP CRS 353°	Rwy Idg 12000
	TDZE 5434
	Apt Elev 5434

RNAV (RNP) Z RWY 35L

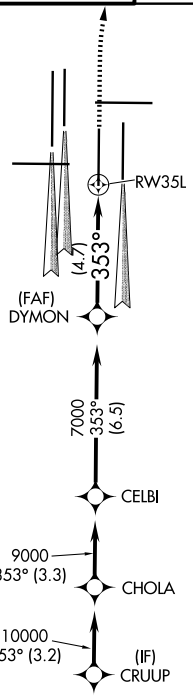
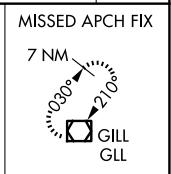
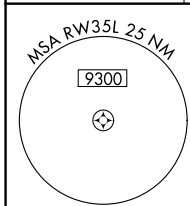
DENVER INTL (DEN)

▽ For uncompensated Baro-VNAV systems, procedure NA below -25°C (-13°F) or above 46°C (115°F). GPS required. For inoperative ALSF, increase RNP 0.10 all Cats visibility to RVR 4500 and RNP 0.30 all Cats visibility to RVR 5000. Simultaneous approach authorized. Use of FD or AP providing RNAV track guidance required during simultaneous operations.

ALSF-2

MISSED APPROACH: Climb to 10000, then right turn direct GLL VOR/DME and hold.

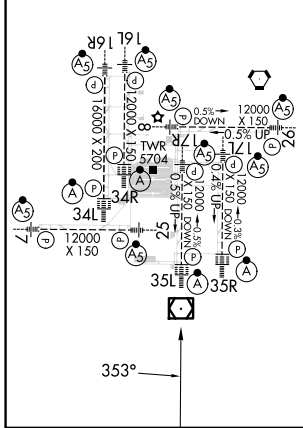
D-ATIS 125.6 379.9 (ARR) 134.025 (DEP)	DENVER APP CON 119.3 307.3 (N) 120.35 379.3 (S)	DENVER TOWER 124.3 322.45	GND CON 121.35 379.175 (W) 121.85 377.1 (E)	CLNC DEL 118.75	CPDLC
--	---	-------------------------------------	---	---------------------------	-------



RADAR REQUIRED

ELEV 5434	D	TDZE 5434
-----------	----------	-----------

HIRL all Rwys
TDZ/CL Rwys 7, 16L, 16R, 17R,
26, 34L, 34R, 35L, 35R



DYMON
7000
VGSi and RNAV glidepath not coincident (VGSi Angle 3.00/TCH 71).

10000

7000

GP 3.00°
TCH 57

4.7 NM

CATEGORY	A	B	C	D
RNP 0.10 DA		5695/24	261 (300-1/2)	
RNP 0.30 DA		5760/32	326 (400-5/8)	

AUTHORIZATION REQUIRED

SW-1, 15 MAY 2025 to 12 JUN 2025

SW-1, 15 MAY 2025 to 12 JUN 2025