

# COORZ SIX DEPARTURE (RNAV)

AL-9077 (FAA)

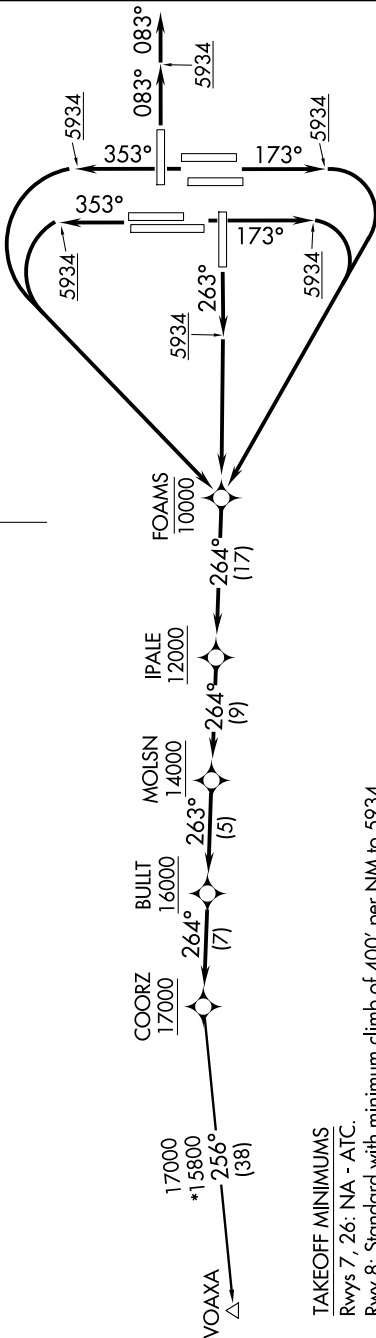
DENVER INTL (DEN)  
DENVER, COLORADO

SW-1, 15 MAY 2025 to 12 JUN 2025

**TOP ALTITUDE:  
FL230**

D-ATIS DEP  
134.025  
CLINC DEL  
118.75  
CPDLC  
DENVER DEP CON  
126.1 360.75

- NOTE: DME/DME/IRU or GPS required.
- NOTE: RNAV 1.
- NOTE: Turbojets only.
- NOTE: Takeoff Rwy 8, RADAR required.
- NOTE: Takeoff Rwys 16L/R, 17L/R, 25, 34L/R, 35L/R, - RADAR required for non-GPS equipped aircraft.
- NOTE: Accelerate to 250K or greater upon reaching 10000. If slower speed is required to meet crossing restrictions advise CLINC DEL prior to taxi.



### TAKEOFF MINIMUMS

- Rwys 7, 26: NA - ATC.
- Rwy 8: Standard with minimum climb of 400' per NM to 5934.
- Rwy 16L: Standard with minimum climb of 400' per NM to 5934, then minimum climb of 215' per NM to 16000.
- Rwy 16R: Standard with minimum climb of 480' per NM to 5934, then minimum climb of 215' per NM to 16000.
- Rwy 17L: Standard with minimum climb of 400' per NM to 5934.
- Rwy 17R: Standard with minimum climb of 400' per NM to 5934, then minimum climb of 205' per NM to 16000.
- Rwy 25: Standard with minimum climb of 425' per NM to 5934, then minimum climb of 225' per NM to 16000.
- Rwy 34L: Standard with minimum climb of 400' per NM to 5934, then minimum climb of 215' per NM to 16000.
- Rwy 34R: Standard with minimum climb of 400' per NM to 5934, then minimum climb of 210' per NM to 16000.
- Rwy 35L: Standard with minimum climb of 360' per NM to 5934, then minimum climb of 205' per NM to 16000.
- Rwy 35R: Standard with minimum climb of 375' per NM to 5934.

(NARRATIVE ON FOLLOWING PAGE)

NOTE: Chart not to scale.

SW-1, 15 MAY 2025 to 12 JUN 2025