

WAAS CH 77725 W18A	APP CRS 178°	Rwy Idg TDZE Apt Elev	3807 282 282
--	------------------------	-----------------------------	---

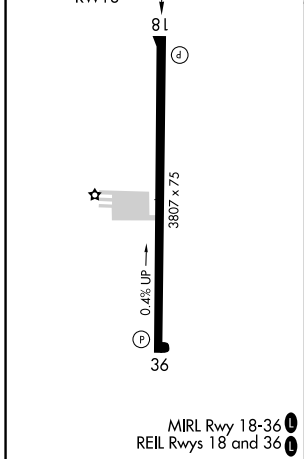
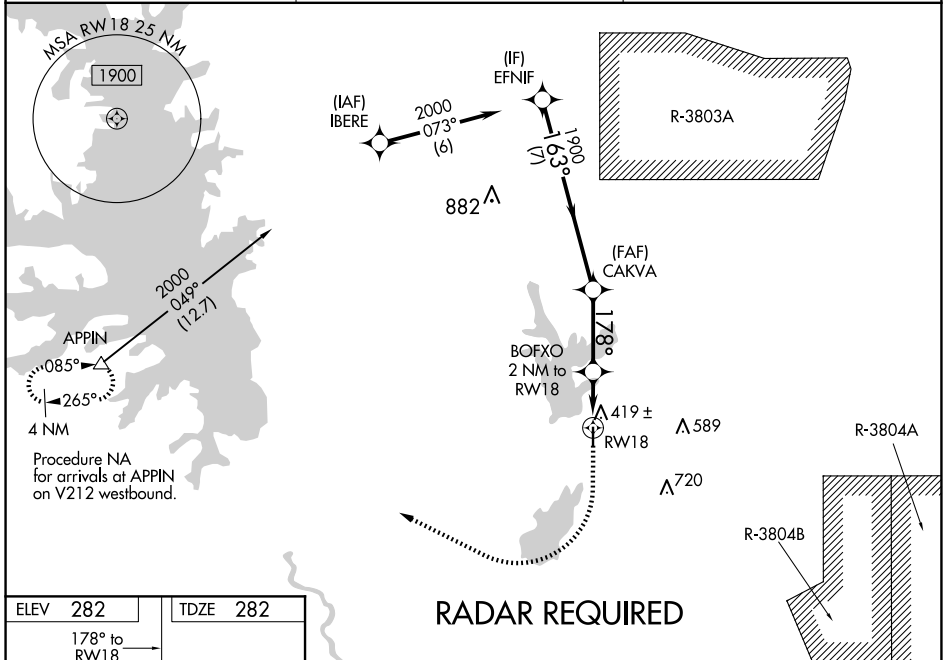
RNAV (GPS) RWY 18

LEESVILLE (L39)

▼ When VGSI inop, Circling Rwy 36 NA at night. Baro-VNAV NA. When VGSI inop, Straight-in/Circling Rwy 18 procedure NA at night. DME/DME RNP-0.3 NA.
▲ NA Visibility reduction by helicopters NA. Use Fort Polk altimeter setting; when not received, use De Ridder altimeter setting and increase all DA 26 feet and all MDA 40 feet; increase LNAV/VNAV all Cats visibility and LNAV Cat C visibility 1/8 SM, and Circling Cat C visibility 1/4 SM.

MISSED APPROACH: Climb to 800 then climbing right turn to 4000 direct APPIN and hold.

KPOE ATIS 134.85 282.2	POLK APP CON 123.7 261.3	UNICOM 122.8 (CTAF) 📻
----------------------------------	------------------------------------	--



ELEV 282	TDZE 282			
800	4000	APPIN		
*LNAV only.				
BOFXO 2 NM to RWY 18	CAKVA	EFNIF		
RWY 18	178°	163°		
2 NM	2.9 NM	7 NM		
1900	2000	GP 3.00° TCH 50		
960*				
CATEGORY	A	B	C	D
LPV DA	564-1	282 (300-1)		NA
LNAV/VNAV DA	622-1 1/8	340 (400-1 1/8)		NA
LNAV MDA	720-1	438 (500-1)	720-1 1/4 438 (500-1 1/4)	NA
CIRCLING	760-1 478 (500-1)	800-1 518 (600-1)	1000-2 718 (800-2)	NA

SC-4, 15 MAY 2025 TO 12 JUN 2025

SC-4, 15 MAY 2025 TO 12 JUN 2025