

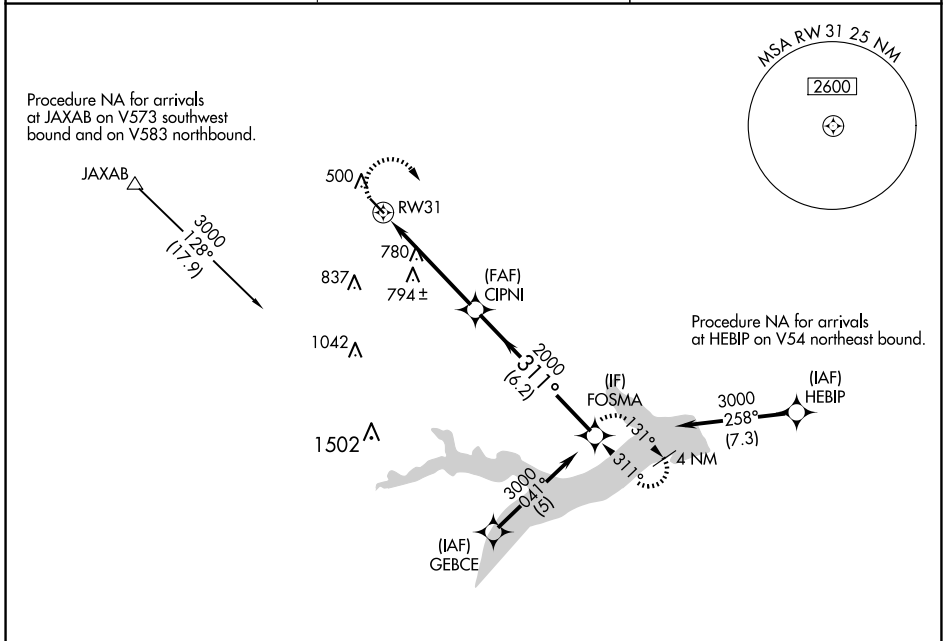
APP CRS 311°	Rwy Idg 3900
	TDZE 412
	Apt Elev 412

RNAV (GPS) RWY 31

FRANKLIN COUNTY (F53)

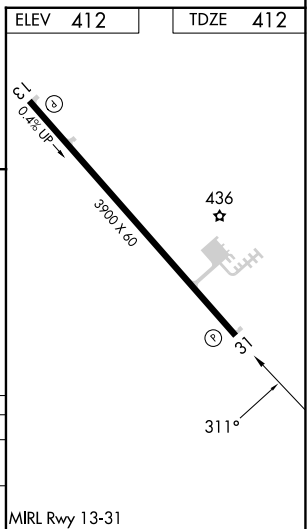
RNP APCH.	<p>▼ Circling Rwy 13 NA at night. Rwy 31 helicopter visibility reduction below 3/4 SM NA. ▲ NA Use Mount Pleasant Rgnl altimeter setting; when not received, procedure NA.</p>	MISSED APPROACH: Climbing right turn to 3000 direct FOSMA and hold.
-----------	---	---

OSA AWOS-3 119.775	FORT WORTH CENTER 132.025 360.75	UNICOM 123.0 (CTAF)
------------------------------	--	-------------------------------



SC-2, 15 MAY 2025 to 12 JUN 2025

SC-2, 15 MAY 2025 to 12 JUN 2025



3000	FOSMA		
		CIPNI	FOSMA
		RW31	3000
		3.05° TCH 40	2000
		4.8 NM	6.2 NM
CATEGORY	A	B	C
RNAV MDA	1160-1 748 (800-1)	1160-1½ 748 (800-1½)	NA
CIRCLING	1160-1 748 (800-1)	1160-1½ 748 (800-1½)	NA

MIRL Rwy 13-31