

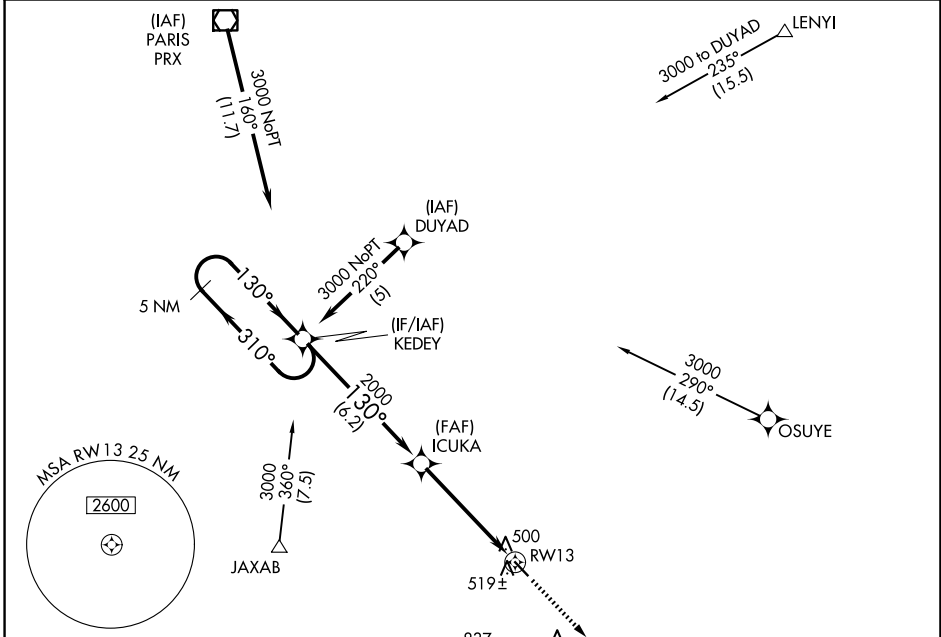
APP CRS **130°**
 Rwy Idg **3900**
 TDZE **408**
 Apt Elev **412**

RNAV (GPS) RWY 13
 FRANKLIN COUNTY (F53)

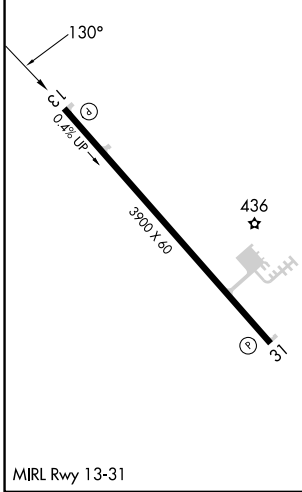
NA DME/DME RNP-0.3 NA. Use Mount Pleasant Rgnl altimeter setting; if not received, procedure NA. Procedure NA at night. Helicopter visibility reduction below 1 SM NA.

MISSED APPROACH: Climb to 3000 direct FOSMA and hold.

OSA AWOS-3 119.775	FORT WORTH CENTER 132.025 360.75	UNICOM 123.0 (CTAF)
------------------------------	--	-------------------------------



ELEV 412	TDZE 408
-----------------	-----------------



5 NM Holding Pattern	VGSIs and descent angles not coincident (VGSIs Angle 3.00/TCH 37).			3000	FOSMA
3000 ← 310°	→ 130°	130°	ICUKA	2000	RW13
		6.2 NM	4.9 NM		
CATEGORY	A	B	C	D	
LNAV MDA	820-1	412 (500-1)	NA		
CIRCLING	940-1 528 (600-1)	980-1 568 (600-1)	NA		

SC-2, 15 MAY 2025 to 12 JUN 2025

SC-2, 15 MAY 2025 to 12 JUN 2025