

RNAV (GPS) RWY 13

COOPERSTOWN MUNI (S32)

APP CRS	Rwy Idg	3500
129°	TDZE	1424
	Apt Elev	1424

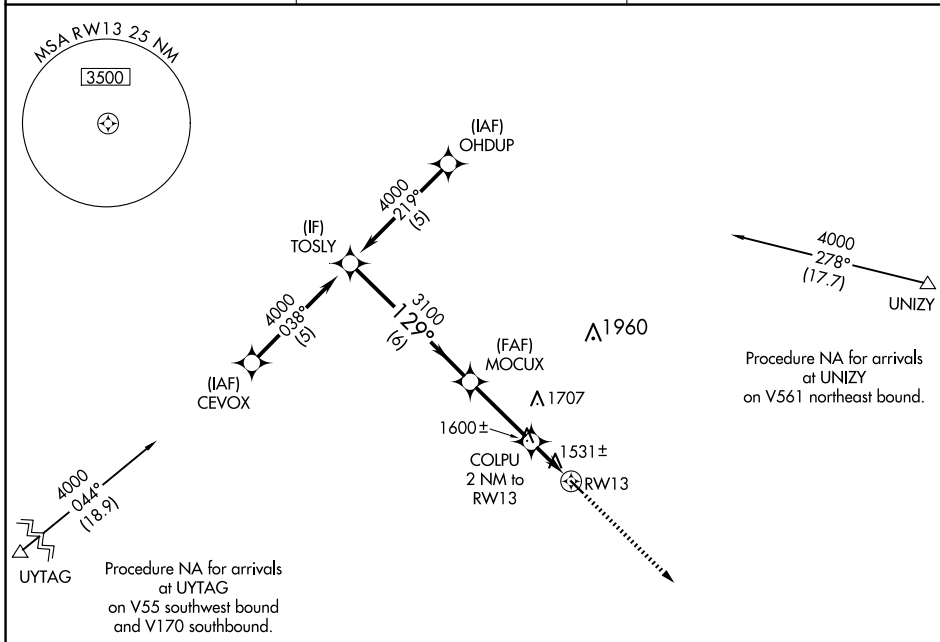
NA DME/DME RNP-0.3 NA. Visibility reduction by helicopters NA. When local altimeter setting not received, use Jamestown altimeter setting and increase all MDA 100 feet and increase LNAV Cat C visibility 1/4 mile.

MISSED APPROACH: Climb to 3100 direct RAKGU and hold.

AWOS-3
118.75

MINNEAPOLIS CENTER
132.15 269.6

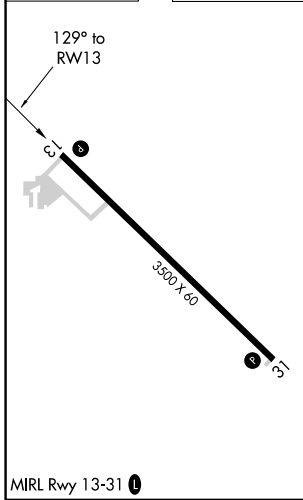
CTAF
122.9



NC-1, 15 MAY 2025 to 12 JUN 2025

NC-1, 15 MAY 2025 to 12 JUN 2025

ELEV 1424	TDZE 1424
-----------	-----------



VGSI and descent angles not coincident (VGSI Angle 3.00/TCH 25).

3100 RAKGU

Procedure Turn NA

TOSLY 4000 → MOCUX 3100 → COLPU 2100 → RWY 13 (3.04° TCH 40)

6 NM | 3.1 NM | 2 NM

CATEGORY	A	B	C	D
LNAV MDA	1860-1	436 (500-1)	1860-1/4 436 (500-1/4)	NA
CIRCLING	1880-1	456 (500-1)	1880-1/2 456 (500-1/2)	NA

MIRL Rwy 13-31
COOPERSTOWN, NORTH DAKOTA
Orig 18NOV10

COOPERSTOWN MUNI (S32)
47°25'N-98°06'W

RNAV (GPS) RWY 13