

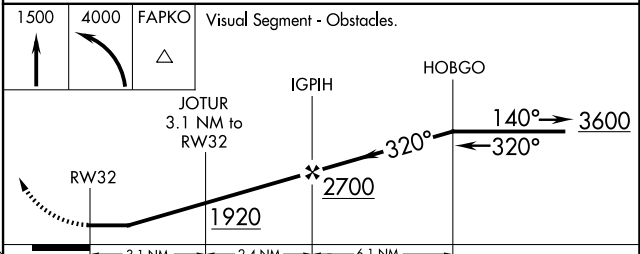
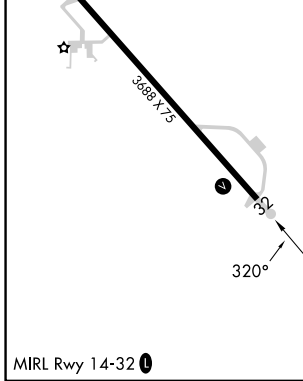
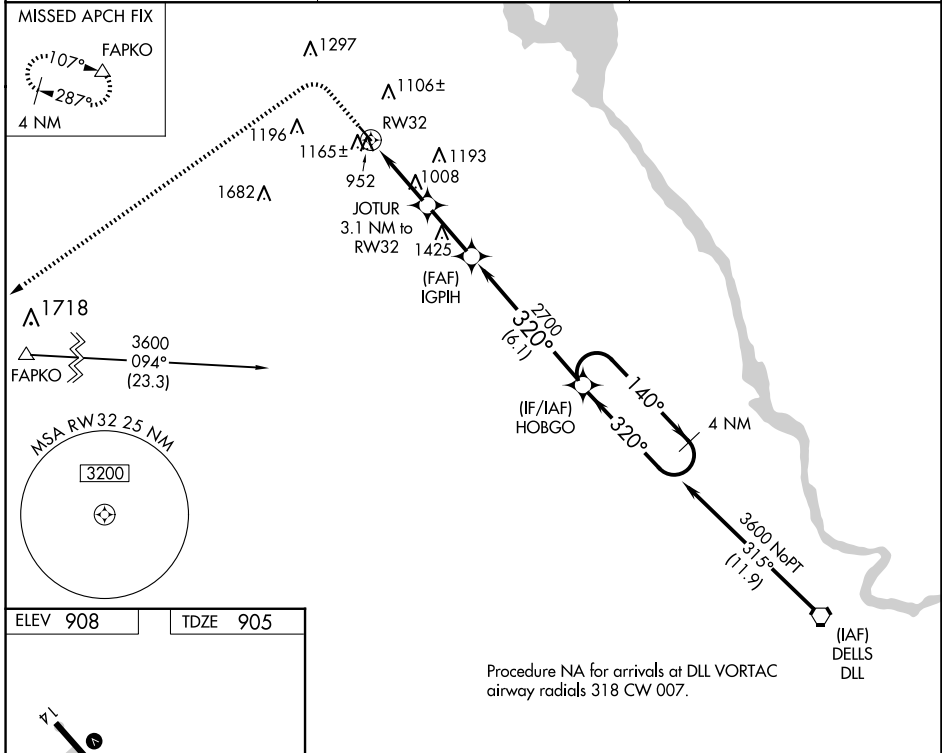
WAAS CH <b>49129</b> <b>W32A</b>	APP CRS <b>320°</b>	Rwy Idg TDZE Apt Elev	<b>3688</b> <b>905</b> <b>908</b>
--	------------------------	-----------------------------	---

# RNAV (GPS) RWY 32

MAUSTON/NEW LISBON UNION (82C)

RNP APCH.	MISSED APPROACH: Climb to 1500 then climbing left turn to 4000 direct FAPKO and hold.
<p>▼ Use Volk Field altimeter setting; when not received use Wisconsin Dells altimeter setting and increase all MDA 60 feet and all Cat C visibilities 1/4 mile. Procedure NA at night. Helicopter visibility reduction below 1 SM NA.</p>	

AWOS-3 <b>123.925</b>	VOLK APP CON ★ <b>135.25 244.875</b>	CTAF <b>122.9 0</b>
--------------------------	---	------------------------



	A	B	C	D
LP MDA	1280-1	375 (400-1)	1280-1 1/8 375 (400-1 1/8)	NA
LNAV MDA	1440-1	535 (600-1)	1440-1 1/8 535 (600-1 1/8)	NA

EC-3, 15 MAY 2025 to 12 JUN 2025

EC-3, 15 MAY 2025 to 12 JUN 2025