

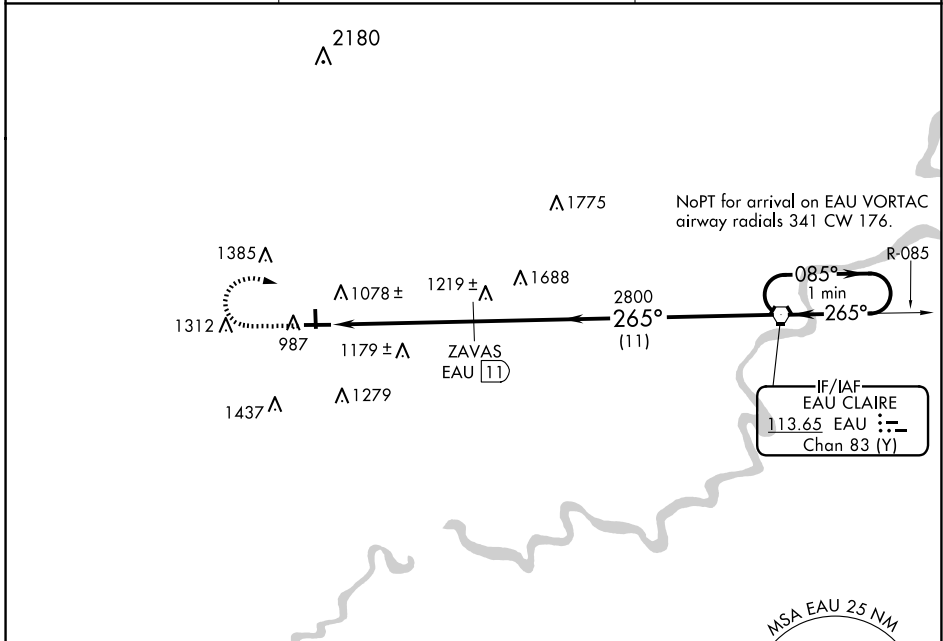
VORTAC EAU 113.65 Chan 83 (Y)	APP CRS 265°	Rwy Idg TDZE Apt Elev	5074 894 895
---	------------------------	-----------------------------	---

VOR/DME RWY 27
MENOMONIE MUNI/SCORE FLD (LUM)

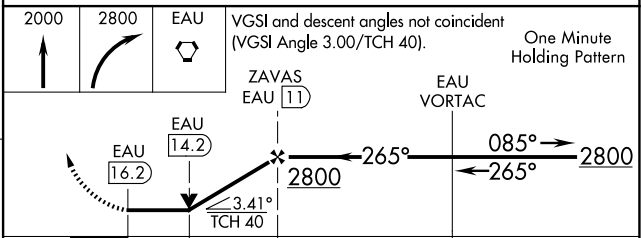
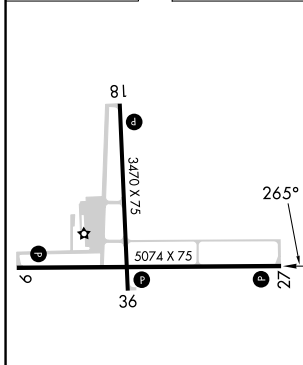
⚠ When local altimeter setting not received, use Chippewa Valley Rgnl altimeter setting and increase all MDA 60 feet, increase Circling Cat B and C visibility ¼ SM. VDP NA when using Chippewa Valley Rgnl altimeter setting. Rwy 27 helicopter visibility reduction below ¾ SM NA.

MISSED APPROACH: Climb to 2000 then climbing right turn to 2800 direct EAU VORTAC and hold.

AWOS-3 118.025	MINNEAPOLIS CENTER 125.3 335.6	UNICOM 122.7 (CTAF) 0
--------------------------	--	--



ELEV 895	TDZE 894
----------	----------



VGSI and descent angles not coincident (VGSI Angle 3.00/TCH 40).	One Minute Holding Pattern			
	A	B	C	D
S-27	1560-1	666 (700-1)	1560-1¾ 666 (700-1¾)	NA
C CIRCLING	1560-1 665 (700-1)	1800-1¼ 905 (1000-1¼)	1820-2¾ 925 (1000-2¾)	NA

EC-3, 15 MAY 2025 to 12 JUN 2025

EC-3, 15 MAY 2025 to 12 JUN 2025