

APP CRS 142°	Rwy Idg 3498
	TDZE 1610
	Apt Elev 1610

RNAV (GPS) RWY 14

MANITOWISH WATERS (D25)

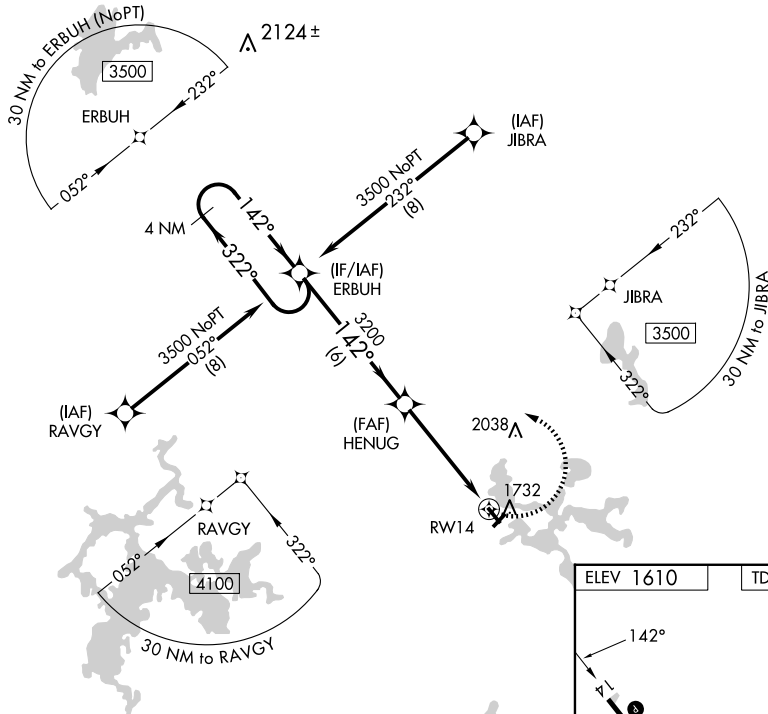
▼ Circling NA to Rws 4 and 22. DME/DME RNP-0.3 NA. Procedure NA at night. Rwy 14 helicopter visibility reduction below 1 SM NA. When local altimeter setting not received, use Minocqua-Woodruff altimeter setting; increase all MDA 40 feet, increase LNAV Cat C visibility 1/8 mile and Circling Cat C visibility 1/4 mile.

MISSED APPROACH:
Climbing left turn to 3500
direct ERBUH and hold.

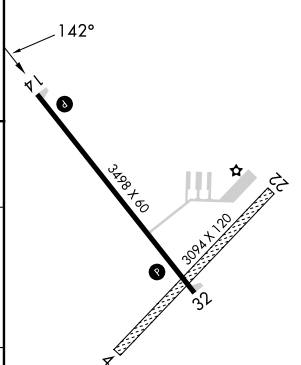
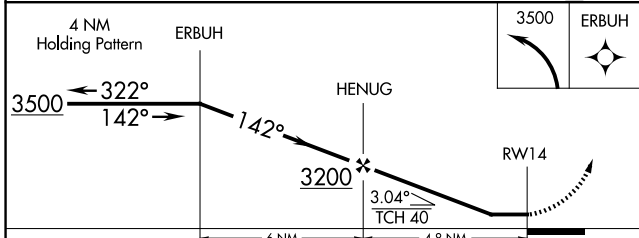
AWOS-3PT
118.175

MINNEAPOLIS CENTER
133.65 281.5

UNICOM
122.8 (CTAF) ①



ELEV 1610	TDZE 1610
-----------	-----------



CATEGORY	A	B	C	D
LNAV MDA	2100-1	490 (500-1)	2100-1 3/8 490 (500-1 3/8)	NA
C CIRCLING	2100-1	490 (500-1)	2340-2 730 (800-2)	NA

REIL Rws 14 and 32 ①
MIRL Rwy 14-32 ①

EC-3, 15 MAY 2025 to 12 JUN 2025

EC-3, 15 MAY 2025 to 12 JUN 2025