


WAAS CH 58244 W36A	APP CRS 360°	Rwy Idg TDZE Apt Elev	6001 1301 1316
--	------------------------	-----------------------------	---

RNAV (GPS) RWY 36


MONETT RGNL (HFJ)

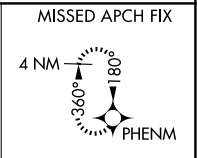
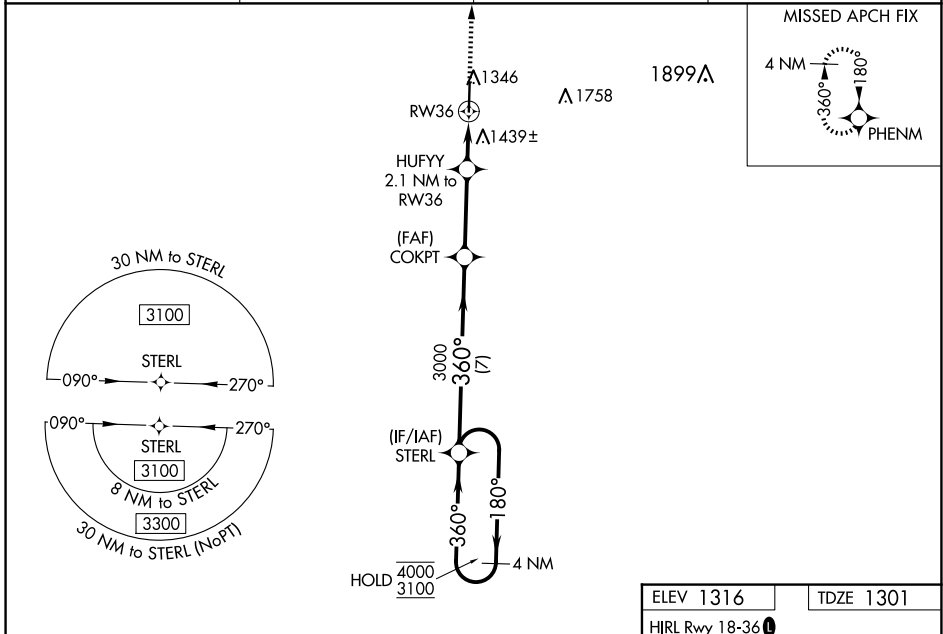
RNP APCH - GPS.

⚠ Baro-VNAV and VDP NA when using Joplin altimeter setting. For uncompensated Baro-VNAV systems, LNAV/VNAV NA below -17°C or above 54°C. When local altimeter setting not received, use Joplin altimeter setting: increase LPV DA to 1613 feet; increase LNAV/VNAV DA to 1862 feet and all visibilities $\frac{3}{8}$ SM; increase all MDAs 120 feet and LNAV visibility Cats C and D $\frac{3}{8}$ SM, and Circling visibility Cat C/D $\frac{1}{2}$ SM.

MALSRL 

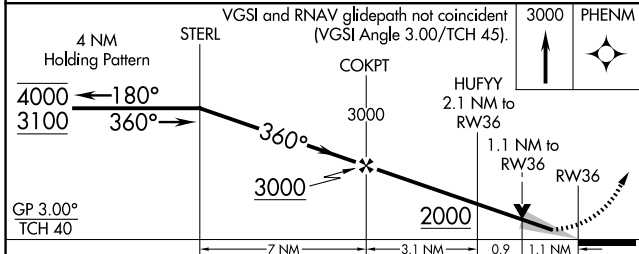
MISSED APPROACH: Climb to 3000 direct PHENM and hold.

AWOS-3 118.275	SPRINGFIELD APP CON 124.95 318.2	CLNC DEL 121.85	UNICOM 123.075 (CTAF) 
--------------------------	--	---------------------------	---





NC-3, 15 MAY 2025 to 12 JUN 2025


NC-3, 15 MAY 2025 to 12 JUN 2025



ELEV 1316	TDZE 1301
-----------	-----------

HIRL Rwy 18-36 

REIL Rwy 18 

CATEGORY	A	B	C	D
LPV DA		1501- $\frac{1}{2}$	200 (200- $\frac{1}{2}$)	
LNAV/VNAV DA		1750- $\frac{7}{8}$	449 (500- $\frac{7}{8}$)	
LNAV MDA	1700- $\frac{1}{2}$	399 (400- $\frac{1}{2}$)	1700- $\frac{5}{8}$	399 (400- $\frac{5}{8}$)
 CIRCLING	1760-1 444 (500-1)	1900-1 584 (600-1)	1900-1 $\frac{1}{2}$ 584 (600-1 $\frac{1}{2}$)	2060-2 $\frac{1}{2}$ 744 (800-2 $\frac{1}{2}$)