

HUGO, OKLAHOMA

AL-6979 (FAA)

19339

WAAS CH <b>50437</b> <b>W17A</b>	APP CRS <b>178°</b>	Rwy Idg TDZE Apt Elev	<b>4007</b> <b>570</b> <b>572</b>
--	------------------------	-----------------------------	---

# RNAV (GPS) RWY 17

STAN STAMPER MUNI (HHW)

RNP APCH.

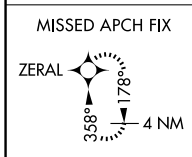
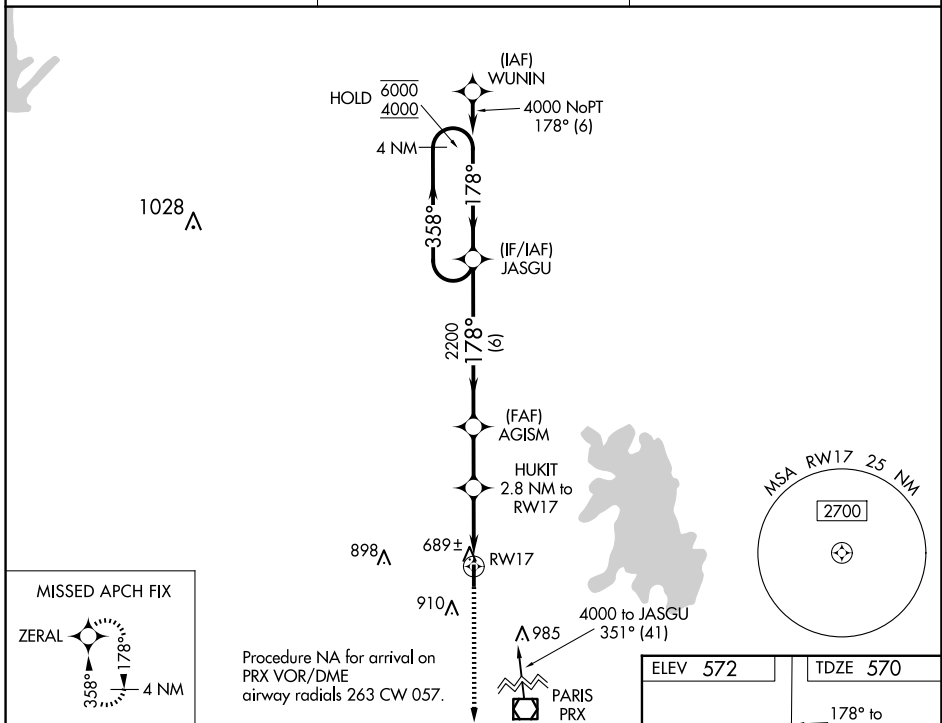
**▼** Circling Rwy 35 NA at night. Rwy 17 helicopter visibility reduction below  $\frac{3}{4}$  SM NA.  
**▲** For uncompensated Baro-VNAV systems, LNAV/VNAV NA below -16°C or above 54°C.

MISSED APPROACH: Climb to 2500 direct ZERAL and hold.

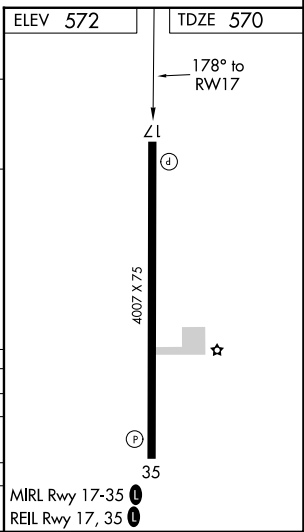
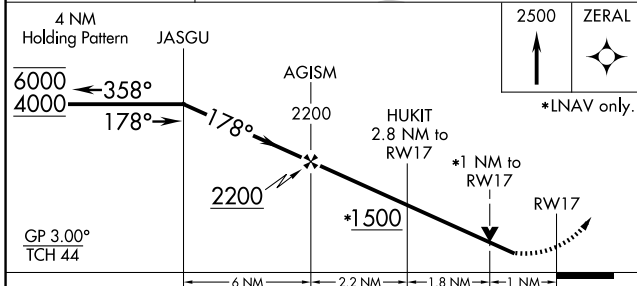
AWOS-3  
**119.025**

FORT WORTH CENTER  
**127.6 307.2**

UNICOM  
**122.8 (CTAF) ①**



Procedure NA for arrival on PRX VOR/DME airway radials 263 CW 057.



CATEGORY	A	B	C	D
LPV DA		820-1	250 (300-1)	
LNAV/VNAV DA		870-1	300 (300-1)	
LNAV MDA		940-1	370 (400-1)	
<b>C</b> CIRCLING	1220-1	648 (700-1)	1340-2 $\frac{1}{4}$ 768 (800-2 $\frac{1}{4}$ )	1340-2 $\frac{1}{2}$ 768 (800-2 $\frac{1}{2}$ )

MIRL Rwy 17-35 ①  
REIL Rwy 17, 35 ①

HUGO, OKLAHOMA  
Amdt 1A 05DEC19

34°02'N-95°33'W

# STAN STAMPER MUNI (HHW) RNAV (GPS) RWY 17

SC-1, 15 MAY 2025 to 12 JUN 2025

SC-1, 15 MAY 2025 to 12 JUN 2025