

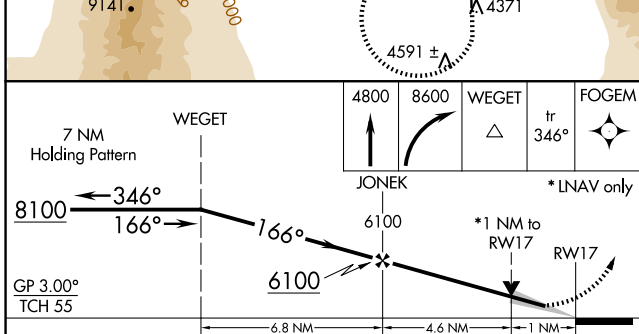
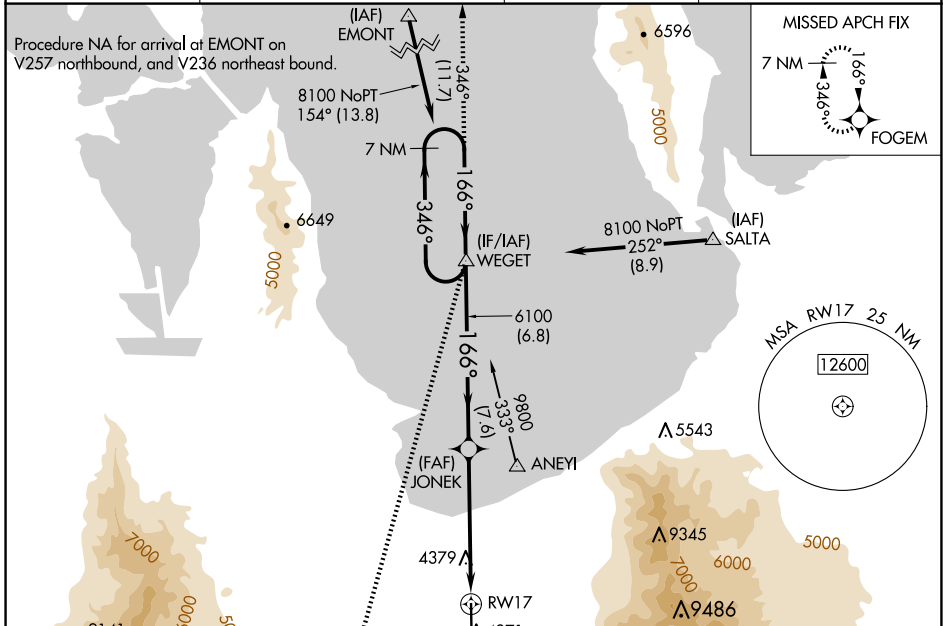
WAAS CH 73031 W17A	APP CRS 166°	Rwy Idg TDZE Apt Elev	6102 4297 4322
--	------------------------	-----------------------------	---

RNAV (GPS) RWY 17

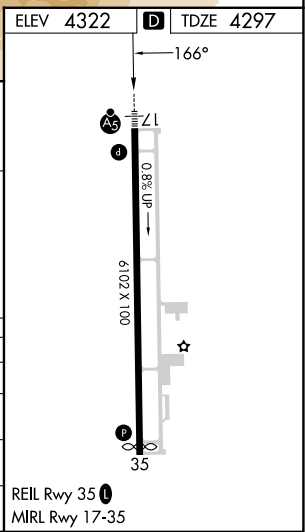
BOLINDER FLD/TOOELE VALLEY (TVY)

For uncompensated Baro-VNAV systems, LNAV/VNAV NA below -23°C (-9°F) or above 49°C (120°F). DME/DME RNP-0.3 NA. For inop ALS, increase LNAV/VNAV all Cats visibility to ¾ SM, increase LNAV Cat C/D visibility to 1 SM.	MALSR 	MISSED APPROACH: Climb to 4800 then climbing right turn to 8600 direct WEGET and track 346° to FOGEM and hold.
	UNICOM 123.0 (CTAF)	

AWOS-3 119.725	SALT LAKE CITY APP CON 135.5 316.15	CLNC DEL 124.4	UNICOM 123.0 (CTAF)
--------------------------	---	--------------------------	-------------------------------



CATEGORY	A	B	C	D
LPV DA	4497-½		200 (200-½)	
LNAV/VNAV DA	4547-½		250 (300-½)	
LNAV MDA	4640-½ 343 (400-½)		4640-⅝ 343 (400-⅝)	
CIRCLING	4820-1 498 (500-1)	4900-1 578 (600-1)	5060-2 738 (800-2)	5380-3 1058 (1100-3)



SW-4, 15 MAY 2025 to 12 JUN 2025

SW-4, 15 MAY 2025 to 12 JUN 2025