

WAAS CH <b>86711</b> <b>W15A</b>	APP CRS <b>146°</b>	Rwy Idg TDZE Apt Elev	<b>5001</b> <b>10</b> <b>10</b>
--	------------------------	-----------------------------	---------------------------------------

# RNAV (GPS) RWY 15

SOUTHLAND FLD (UXL)

RNP APCH-GPS

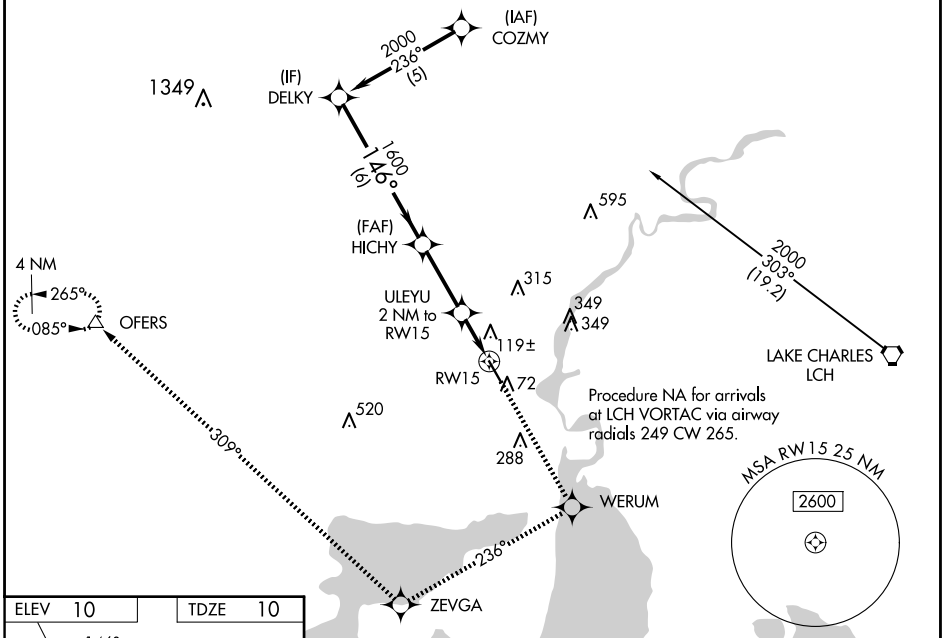
**⚠** Inoperative table does not apply to LNAV/VNAV. Baro-VNAV NA when using Lake Charles Rgnl altimeter setting. For uncompensated Baro-VNAV systems, LNAV/VNAV NA below -15°C or above 48°C. Rwy 15 helicopter visibility reduction below 3/4 SM NA. When local altimeter setting not received, use Lake Charles Rgnl altimeter setting and increase LPV DA to 328 feet and all visibilities 1/4 SM; increase LNAV/VNAV DA to 438 feet; increase all MDAs 20 feet and Circling visibility Cat C/D 1/4 SM. VDP NA when using Lake Charles Rgnl altimeter setting.

ODALS



**MISSED APPROACH:** Climb to 2500 direct WERUM and via 236° track to ZEVGA and via 309° track to OFERS and hold.

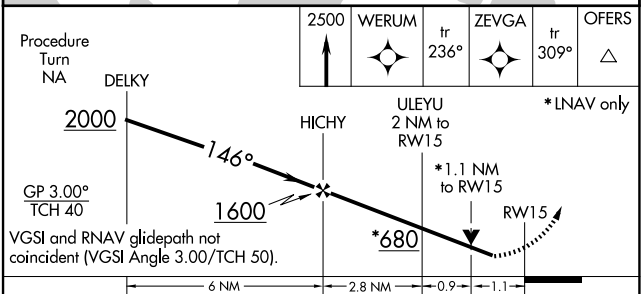
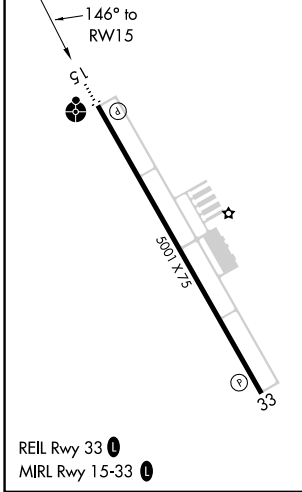
AWOS-3PT <b>118.175</b>	LAKE CHARLES APP CON * <b>119.35 282.3</b>	UNICOM <b>122.8 (CTAF) 0</b>
----------------------------	---	---------------------------------



SC-4, 15 MAY 2025 to 12 JUN 2025

SC-4, 15 MAY 2025 to 12 JUN 2025

ELEV 10	TDZE 10
---------	---------



CATEGORY	A	B	C	D
LPV DA		309-1	299 (300-1)	
LNAV/VNAV DA		419-1½	409 (500-1½)	
LNAV MDA		380-¾	370 (400-¾)	380-1¼ 370 (400-1¼)
CIRCLING	420-1 410 (500-1)	520-1 510 (600-1)	680-1¾ 670 (700-1¾)	680-2 670 (700-2)