

LOC/DME I-SRR <b>110.7</b> Chan 44	APP CRS <b>241°</b>	Rwy Idg <b>8120</b> TDZE <b>6771</b> Apt Elev <b>6814</b>
--	------------------------	---

# ILS or LOC RWY 24

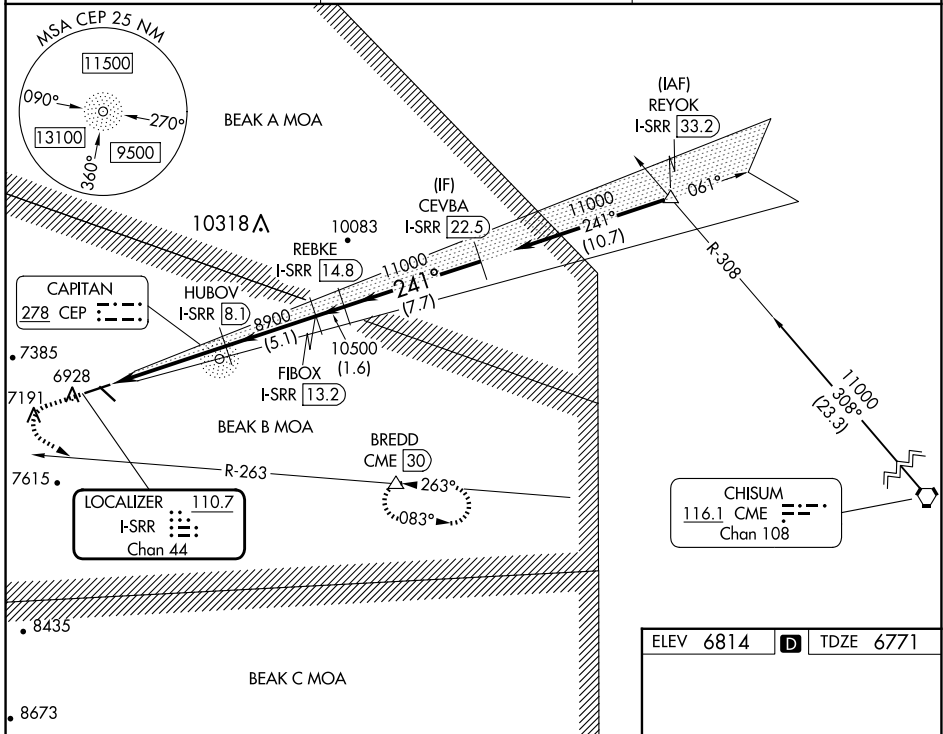
SIERRA BLANCA RGNL (SR.R)

DME required.

Autopilot coupled approach NA below 7200. Circling Rwy 12 NA at night. When local altimeter setting not received, procedure NA.

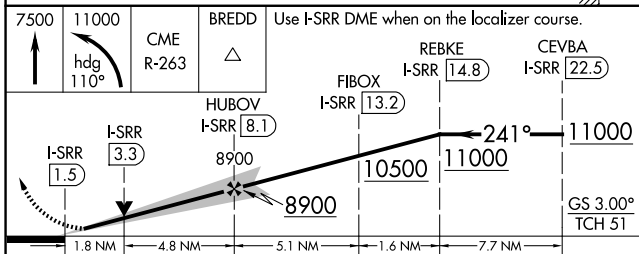
MISSED APPROACH: Climb to 7500 then climbing left turn to 11000 on heading 110° and on COME VORTAC R-263 to BREDD/CME 30 DME and hold, continue climb-in-hold to 11000.

AWOS-3 <b>126.475</b>	ALBUQUERQUE CENTER <b>132.65 257.6</b>	UNICOM <b>122.8 (CTAF)</b>
--------------------------	---	-------------------------------

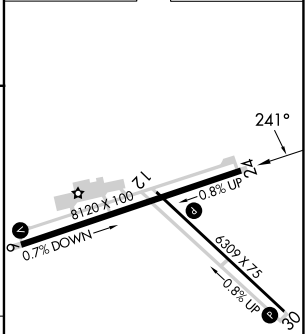


SW-1, 15 MAY 2025 to 12 JUN 2025

SW-1, 15 MAY 2025 to 12 JUN 2025



ELEV 6814	TDZE 6771
-----------	-----------



CATEGORY	A	B	C	D
S-ILS 24	6974-3/4 203 (200-3/4)			
S-LOC 24	7340-1	569 (600-1)	7340-1 5/8	569 (600-1 5/8)
CIRCLING	7340-1	526 (600-1)	7600-2 1/4	7860-3

REIL Rwy 12 and 30	MIRL Rwy 6-24 and 12-30
FAF to MAP 6.6 NM	
Knots	60 90 120 150 180
Min:Sec	6:36 4:24 3:18 2:38 2:12