

# NANDR THREE DEPARTURE (RNAV)

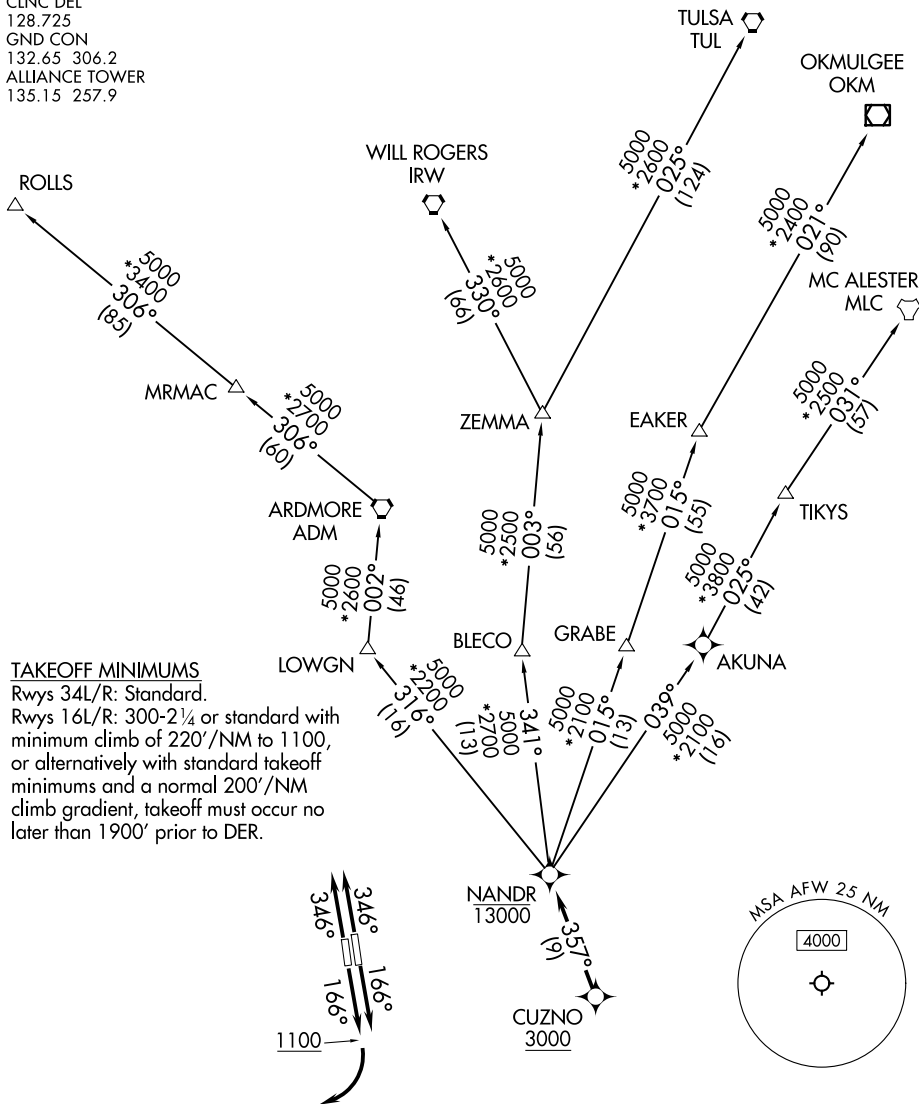
FORT WORTH, TEXAS

LONE STAR DEP CON  
118.1 306.95  
ATIS  
126.925  
CLNC DEL  
128.725  
GND CON  
132.65 306.2  
ALLIANCE TOWER  
135.15 257.9

RNAV 1 - DME/DME/IRU or GPS.

RADAR required.

**TOP ALTITUDE:  
ASSIGNED BY ATC**



### TAKEOFF MINIMUMS

Rwys 34L/R: Standard.  
Rwys 16L/R: 300-2¼ or standard with minimum climb of 220'/NM to 1100, or alternatively with standard takeoff minimums and a normal 200'/NM climb gradient, takeoff must occur no later than 1900' prior to DER.

NOTE: EAKER Transition: For TUL terminal arrivals only.  
NOTE: TULSA Transition: For all aircraft overflying TUL VORTAC.  
NOTE: Aircraft arriving to the Oklahoma City terminal area, file and expect the ZEMMA enroute transition.

NOTE: Chart not to scale.

(CONTINUED ON FOLLOWING PAGE)

# NANDR THREE DEPARTURE (RNAV)

(NANDR3.NANDR) 17APR25

FORT WORTH, TEXAS

PEROT FLD/FORT WORTH ALLIANCE (AFW)

SC-2, 15 MAY 2025 to 12 JUN 2025

SC-2, 15 MAY 2025 to 12 JUN 2025