

# KINGDOM FIVE DEPARTURE

LONE STAR DEP CON  
118.1 306.95  
ATIS  
126.925  
CINC DEL  
128.735  
GND CON  
132.65 306.2  
ALLIANCE TOWER  
135.15 257.9

## TOP ALTITUDE: ASSIGNED BY ATC

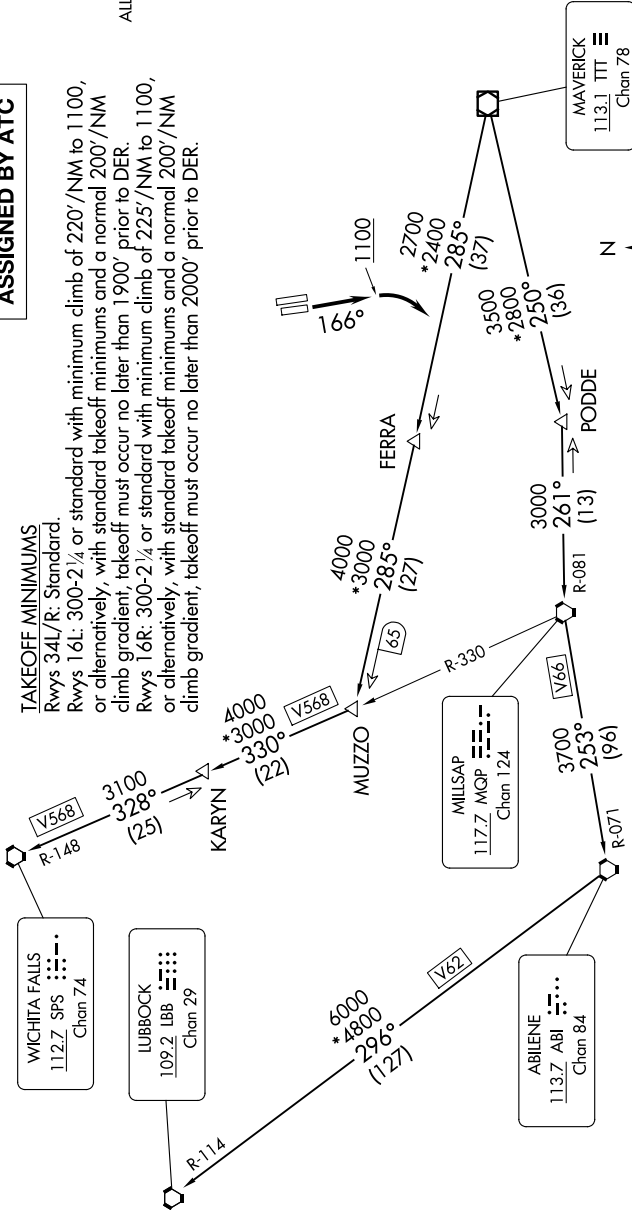
### TAKEOFF MINIMUMS

Rwys 34L/R: Standard.

Rwys 16L: 300'-2 1/4 or standard with minimum climb of 220'/NM to 1100, or alternatively, with standard takeoff minimums and a normal 200'/NM climb gradient, takeoff must occur no later than 1900' prior to DER.

Rwys 16R: 300'-2 1/4 or standard with minimum climb of 225'/NM to 1100, or alternatively, with standard takeoff minimums and a normal 200'/NM climb gradient, takeoff must occur no later than 2000' prior to DER.

RADAR and DME required.



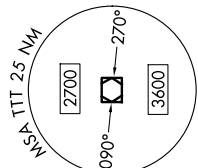
NOTE: LUBBOCK Transition: For all aircraft overlying the MQP VORTAC westbound or direct.

NOTE: MILLSAP Transition: For all aircraft overlying the MQP VORTAC westbound or direct.

NOTE: PODDE Transition: ATC assigned.

NOTE: WICHITA FALLS Transition: For all aircraft landing within the Wichita Falls terminal area or overlying the SPS VORTAC.

NOTE: For all aircraft requesting 17000 and below.



NOTE: Chart not to scale.

(CONTINUED ON FOLLOWING PAGE)