

GARLAND SIX DEPARTURE

SC-2, 15 MAY 2025 to 12 JUN 2025

TOP ALTITUDE: ASSIGNED BY ATC

LONE STAR DEP CON
118.1 306.95
ATIS
126.925
CINC DEL
128.725
GND CON
132.65 306.2
ALLIANCE TOWER
135.15 257.9

RADAR and DME required.

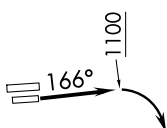
TEXARKANA
116.3 TKX
Chan 110

PARIS
113.6 PRX
Chan 83

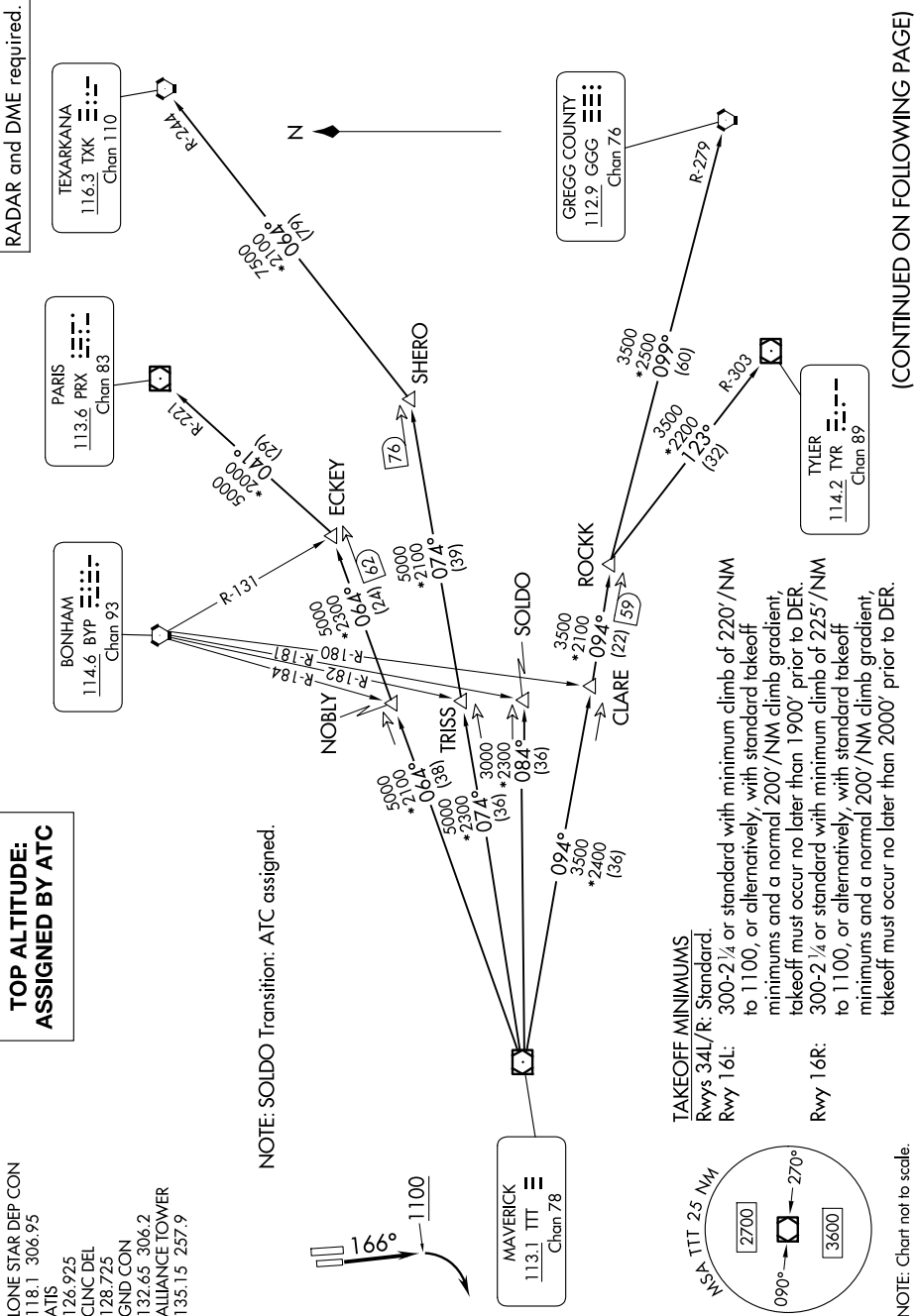
BONHAM
114.6 BYP
Chan 93

GREGG COUNTY
112.9 GGG
Chan 76

TYLER
114.2 TYR
Chan 89

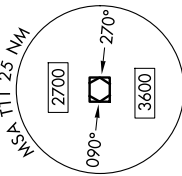


NOTE: SOLDO Transition: ATC assigned.



TAKEOFF MINIMUMS

Rwys 34L/R: Standard.
Rwy 16L: 300-2 1/4 or standard with minimum climb of 220' /NM to 1100, or alternatively, with standard takeoff minimums and a normal 200' /NM climb gradient; takeoff must occur no later than 1900' prior to DER.
Rwy 16R: 300-2 1/4 or standard with minimum climb of 225' /NM to 1100, or alternatively, with standard takeoff minimums and a normal 200' /NM climb gradient; takeoff must occur no later than 2000' prior to DER.



NOTE: Chart not to scale.

(CONTINUED ON FOLLOWING PAGE)

GARLAND SIX DEPARTURE

SC-2, 15 MAY 2025 to 12 JUN 2025