

# KINGDOM FIVE DEPARTURE

FORT WORTH, TEXAS

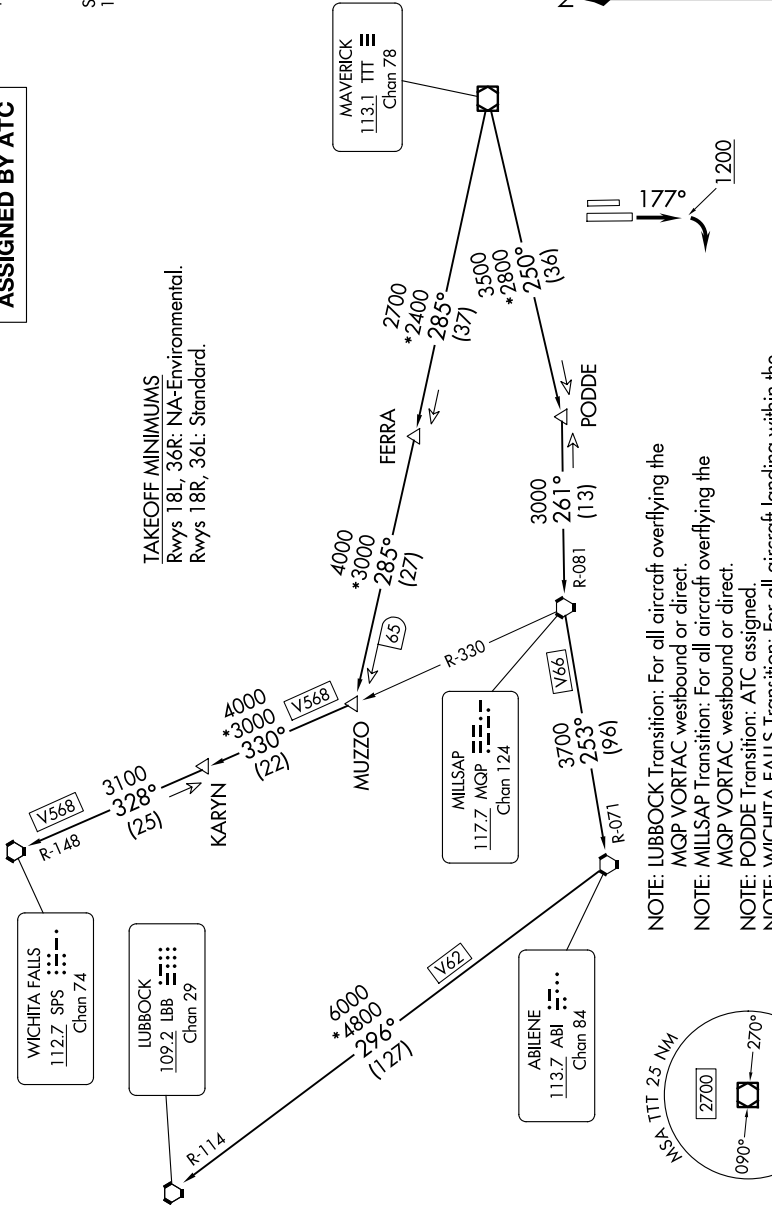
SC-2, 15 MAY 2025 to 12 JUN 2025

RADAR and DME required.

**TOP ALTITUDE:  
ASSIGNED BY ATC**

LONE STAR DEP CON  
135.975 379.9  
ATIS  
120.025  
GND CON  
119.475  
SPINKS TOWER\*  
124.625 (CTAF)

**TAKEOFF MINIMUMS**  
Rwys 18L, 36R: NA-Environmental.  
Rwys 18R, 36L: Standard.



(CONTINUED ON FOLLOWING PAGE)

NOTE: Chart not to scale.

SC-2, 15 MAY 2025 to 12 JUN 2025

# KINGDOM FIVE DEPARTURE

FORT WORTH, TEXAS

FORT WORTH SPINKS (FWS)