

GARLAND SIX DEPARTURE

(CONTINUED ON FOLLOWING PAGE)

LONE STAR DEP CON
 135.975 379.9
 ATIS
 120.025
 GND CON
 119.475
 SPINKS TOWER*
 124.625 (CTAF)

TOP ALTITUDE: ASSIGNED BY ATC

TAKEOFF MINIMUMS
 Rwy 18L: 36R: NA-Environmental.
 Rwy 18R, 36L: Standard.

NOTE: SOLDO Transition: ATC assigned.

RADAR and DME required.

TEXARKANA
 116.3 TKX
 Chan 110

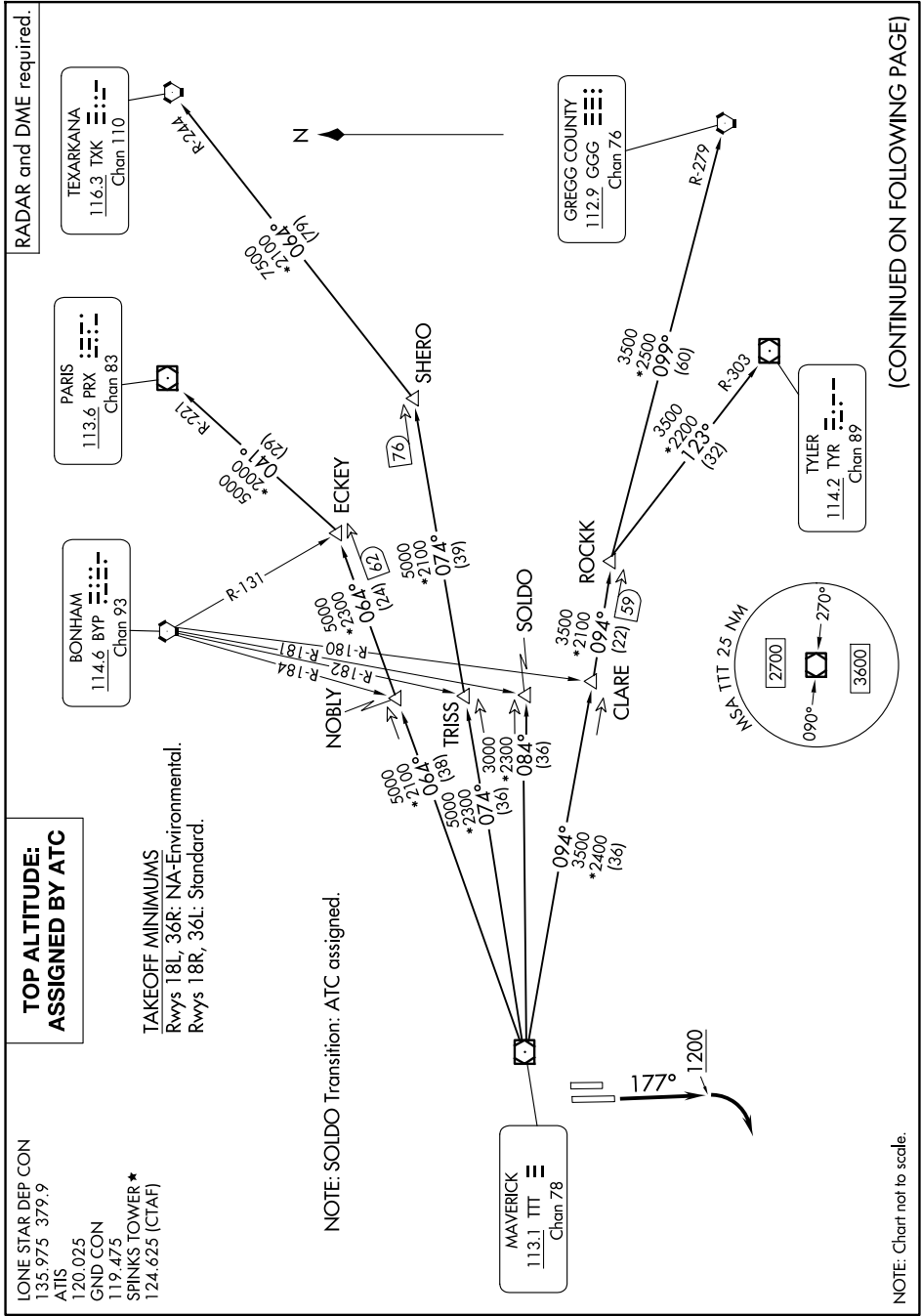
PARIS
 113.6 PRX
 Chan 83

BONHAM
 114.6 BYP
 Chan 93

GREGG COUNTY
 112.9 GGG
 Chan 76

TYLER
 114.2 TYR
 Chan 89

MAVERICK
 113.1 TTT
 Chan 78



NOTE: Chart not to scale.

SC-2, 15 MAY 2025 to 12 JUN 2025

SC-2, 15 MAY 2025 to 12 JUN 2025