

APP CRS 099°	Rwy Idg 4199
	TDZE 855
	Apt Elev 855

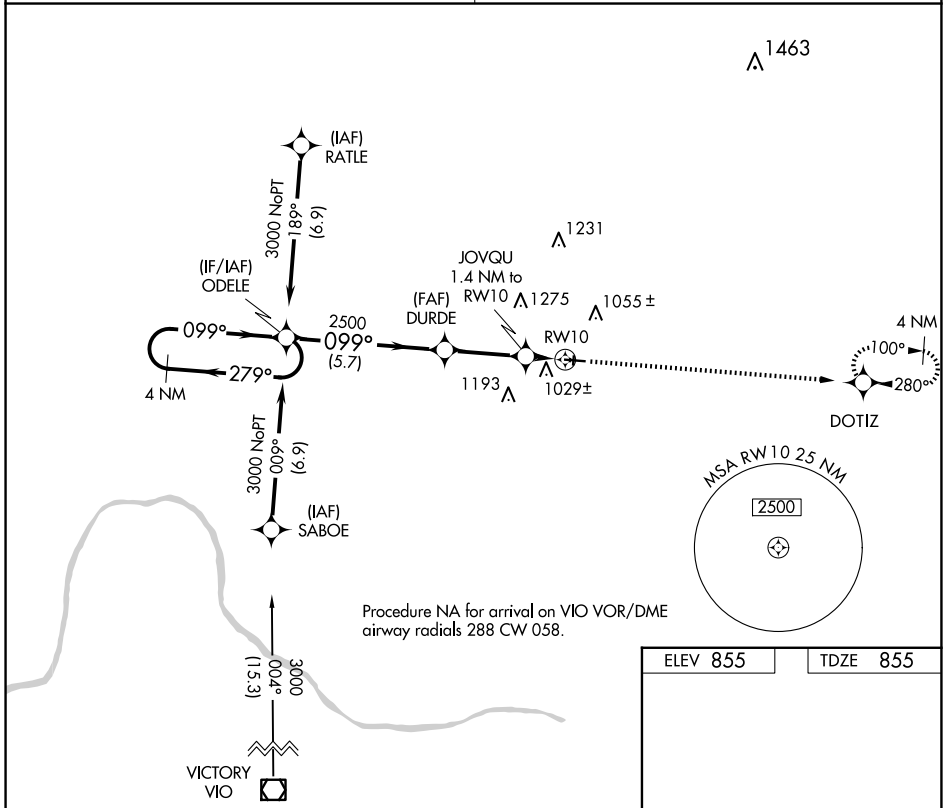
RNAV (GPS) RWY 10

GREENVILLE MUNI (6D6)

⚠ Circling NA to Rwy 18 and 36. Rwy 10 helicopter visibility reduction below 1 SM NA. DME/DME RNP-0.3 NA. Straight-in and Circling Rwy 10 NA at night. Use Grand Rapids altimeter setting; when not received, use Ionia altimeter setting.

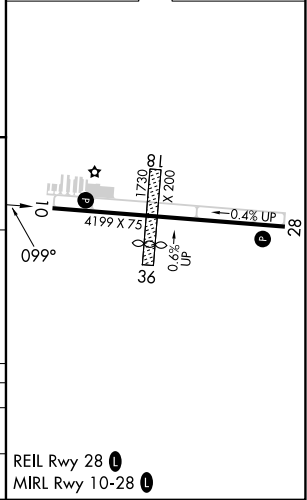
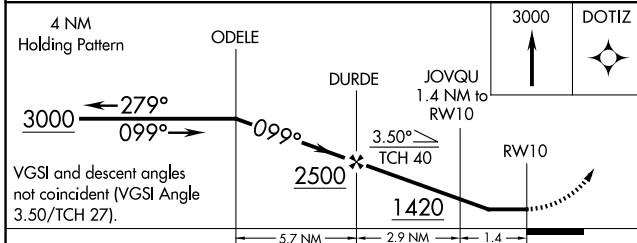
⚠ NA MISSED APPROACH: Climb to 3000 direct DOTIZ and hold.

GREAT LAKES APP CON ★ 124.6 257.6	UNICOM 122.8 (CTAF) 0
---	---------------------------------



Procedure NA for arrival on VIO VOR/DME airway radials 288 CW 058.

ELEV 855	TDZE 855
----------	----------



CATEGORY	A	B	C	D
LNNAV MDA	1340-1	485 (500-1)	1340-1 $\frac{3}{8}$	485 (500-1 $\frac{3}{8}$)
C CIRCLING	1400-1 545 (600-1)	1420-1 565 (600-1)	1680-2 $\frac{1}{2}$ 825 (900-2 $\frac{1}{2}$)	1680-2 $\frac{3}{4}$ 825 (900-2 $\frac{3}{4}$)

REIL Rwy 28 **0**
MIRL Rwy 10-28 **0**

EC-1, 15 MAY 2025 to 12 JUN 2025

EC-1, 15 MAY 2025 to 12 JUN 2025