

VOR/DME RBS 116.8 Chan 115	APP CRS 166°	Rwy Idg 2609 TDZE 777 Apt Elev 779
--	------------------------	---

VOR RWY 18

PAXTON (1C1)

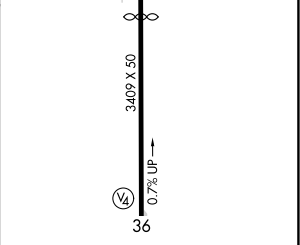
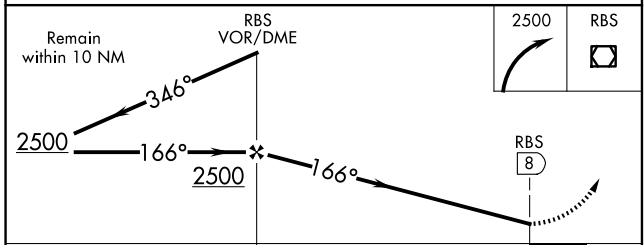
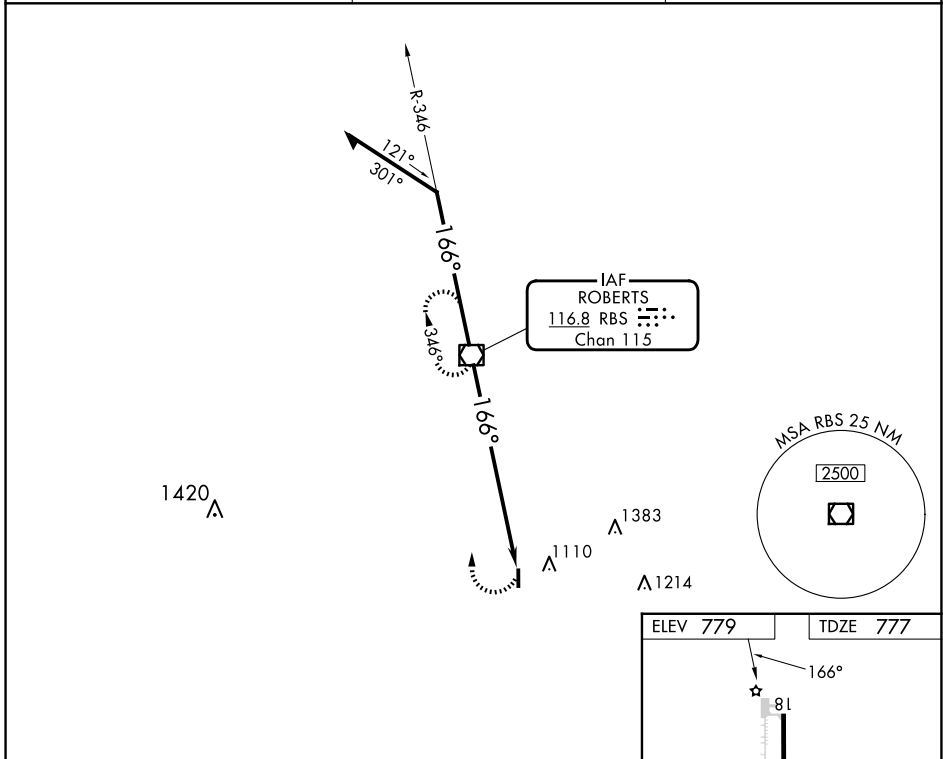
NA Helicopter visibility reduction below 1 SM NA. Use Champaign-Urbana altimeter setting; when not received, use Decatur altimeter setting and increase all MDA 80 feet; increase S-18 Cat A and Circling all Cats visibility ¼ SM, and S-18 Cat C visibility ½ SM. Procedure NA at night.

MISSED APPROACH: Climbing right turn to 2500 direct RBS VOR/DME and hold.

CMI ASOS
124.85

CHAMPAIGN APP CON ★
121.35 285.65

UNICOM
122.8 (CTAF)



CATEGORY	A	B	C	D
S-18	1580-1 803 (900-1)	1580-1¼ 803 (900-1¼)	1580-2¼ 803 (900-2¼)	NA
CIRCLING	1580-1 801 (900-1)	1580-1¼ 801 (900-1¼)	1620-2½ 841 (900-2½)	NA

ELEV 779	TDZE 777
LIRL Rwy 18-36 REIL Rwy 18	
FAF to MAP 8 NM	
Knots	60 90 120 150 180
Min:Sec	8:00 5:20 4:00 3:12 2:40