

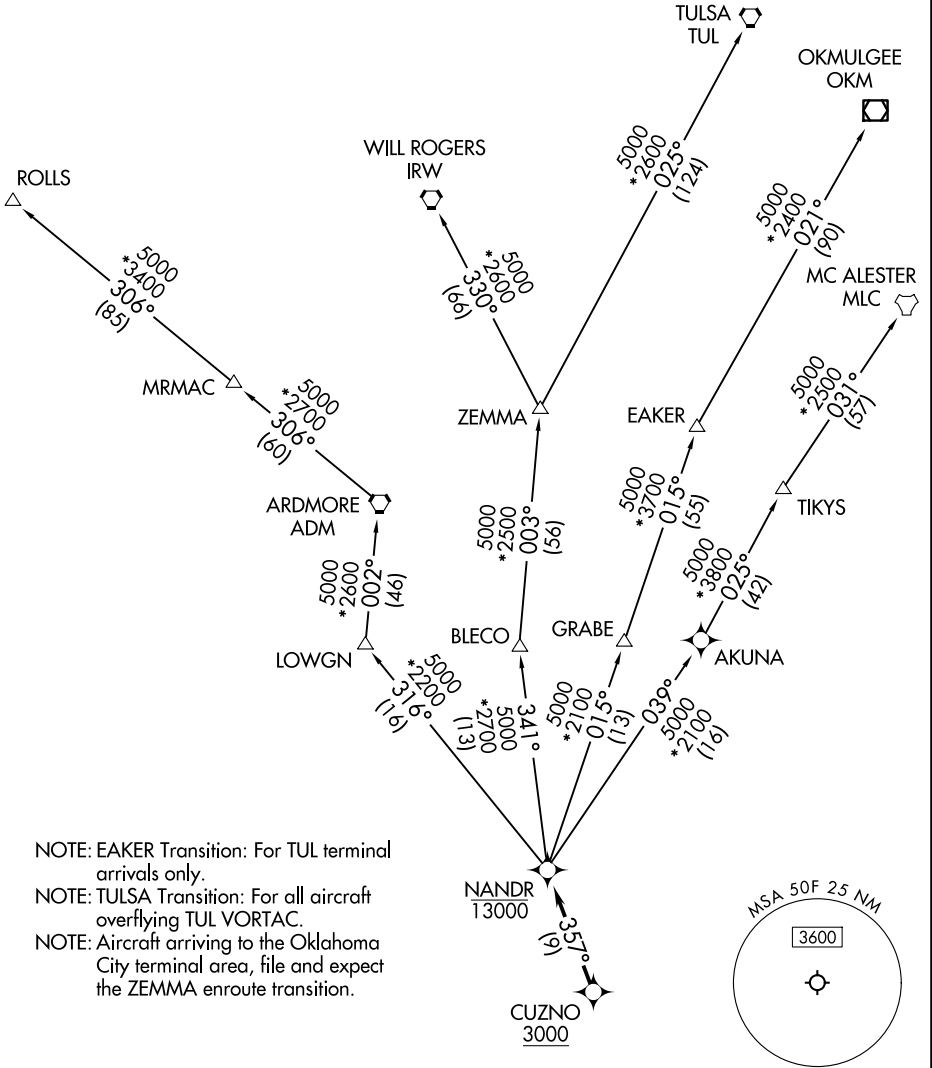
NANDR THREE DEPARTURE (RNAV)

LONE STAR DEP CON
135.975 379.9

RNAV 1 - DME/DME/IRU or GPS.

RADAR required.

**TOP ALTITUDE:
ASSIGNED BY ATC**



NOTE: EAKER Transition: For TUL terminal arrivals only.
 NOTE: TULSA Transition: For all aircraft overflying TUL VORTAC.
 NOTE: Aircraft arriving to the Oklahoma City terminal area, file and expect the ZEMMA enroute transition.

TAKEOFF MINIMUMS
 Rwy 17: 300-2 or standard with minimum climb of 512'/NM to 1300.

NOTE: Chart not to scale.

(CONTINUED ON FOLLOWING PAGE)

SC-2, 15 MAY 2025 to 12 JUN 2025

SC-2, 15 MAY 2025 to 12 JUN 2025