

# KINGDOM FIVE DEPARTURE

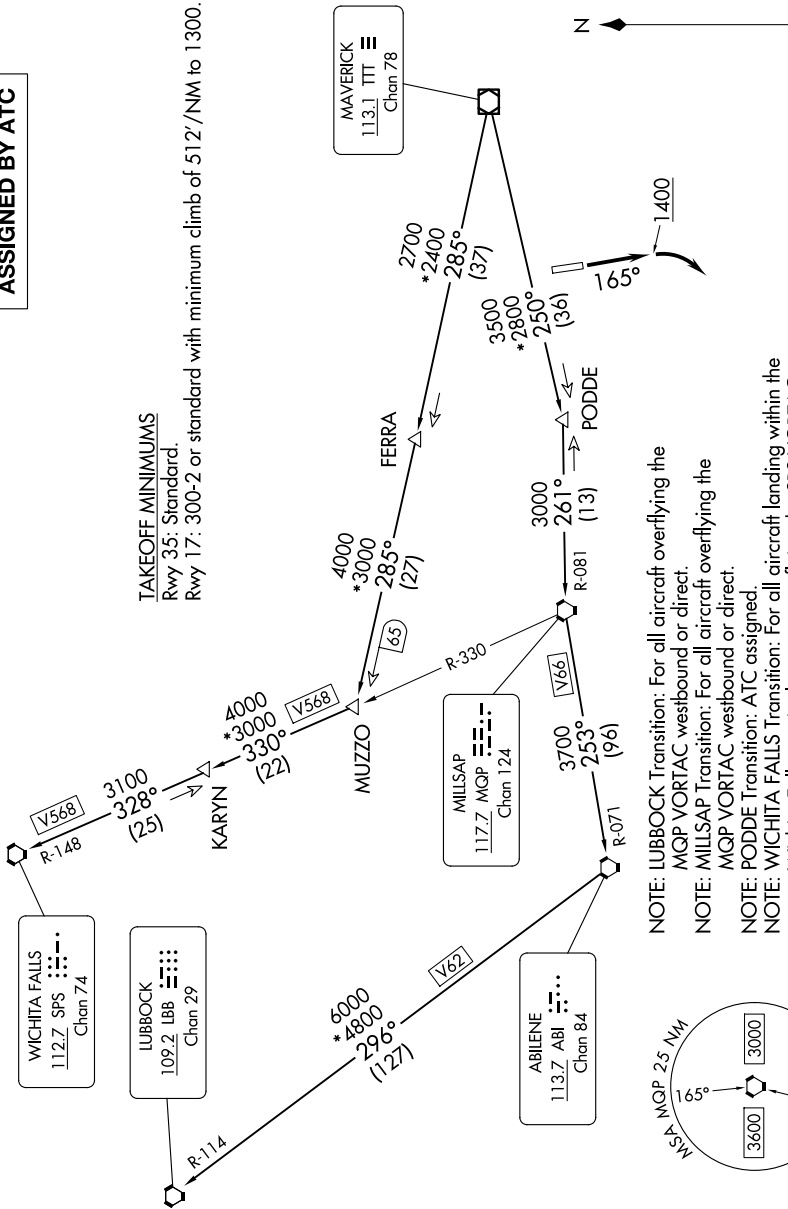
LONE STAR DEP CON  
135.975 379.9  
CTAF  
123.0

**TOP ALTITUDE:  
ASSIGNED BY ATC**

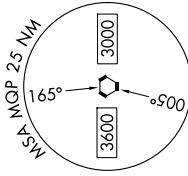
RADAR and DME required.

**TAKEOFF MINIMUMS**

Rwy 35: Standard.  
Rwy 17: 300-2 or standard with minimum climb of 512'/NM to 1300.



- NOTE: LUBBOCK Transition: For all aircraft overlying the MQP VORTAC westbound or direct.
- NOTE: MILLSAP Transition: For all aircraft overlying the MQP VORTAC westbound or direct.
- NOTE: PODDE Transition: ATC assigned.
- NOTE: WICHITA FALLS Transition: For all aircraft landing within the Wichita Falls terminal area or overlying the SPS VORTAC.
- NOTE: For all aircraft requesting 17000 and below.



NOTE: Chart not to scale.

(CONTINUED ON FOLLOWING PAGE)

# KINGDOM FIVE DEPARTURE