

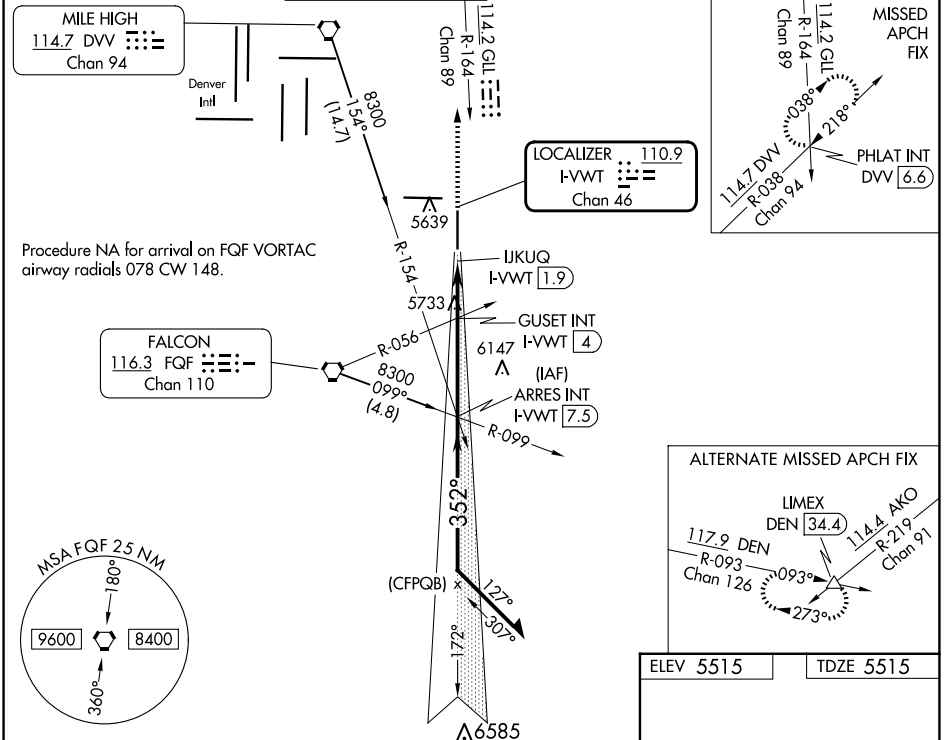
LOC/DME I-VVWT <b>110.9</b> Chan <b>46</b>	APP CRS <b>352°</b>	Rwy Idg TDZE Apt Elev <b>8000</b> <b>5515</b> <b>5515</b>
--	------------------------	--

# ILS or LOC RWY 35

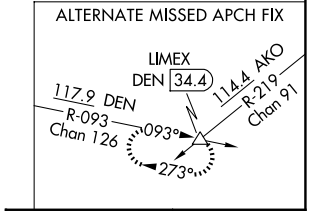
COLORADO AIR AND SPACE PORT (CFO)

<b>▽</b> For inop ALS, increase S-LOC 35 Cats C and D visibility to 2½ SM.	<b>MALSR</b> 	<b>MISSED APPROACH:</b> Climb to 7500 on heading 352° and on GLL VOR/DME R-164 to PHLAT INT/DVV 6.6 DME and hold.
--	------------------	---

ATIS <b>119.025</b>	DENVER APP CON <b>128.25 371.95</b>	SPACE PORT TOWER * <b>120.2 (CTAF)</b>	GND CON <b>124.7</b>	CLNC DEL <b>124.7</b>	CLNC DEL <b>121.75</b> (When twr closed)	UNICOM <b>122.95</b>
------------------------	--	---	-------------------------	--------------------------	--	-------------------------



7500 hdg 352°	GLL R-164	PHLAT INT	ARRES INT I-VVWT 7.5	Remain within 10 NM
*LOC only	IJKUQ I-VVWT 1.9	GUSET INT I-VVWT 4	7500	7900
	0.5	1 NM	1 NM	3.6 NM
CATEGORY	A	B	C	D
S-ILS 35	5715-½		200 (200-½)	
S-LOC 35	6300-½ 785 (800-½)	6300-¾ 785 (800-¾)	6300-1¾	785 (800-1¾)
GUSET FIX MINIMUMS (DUAL VOR RECEIVERS OR DME REQUIRED)				
S-LOC 35	6040-½	525 (600-½)	6040-1 525 (600-1)	



ELEV 5515	TDZE 5515
REIL Rwy 8 and 17	
HIRL Rwy 8-26	
MIRL Rwy 17-35	
FAF to MAP 5.6 NM	
Knots	60 90 120 150 180
Min:Sec	5:36 3:44 2:48 2:14 1:52

SW-1, 15 MAY 2025 to 12 JUN 2025

SW-1, 15 MAY 2025 to 12 JUN 2025