

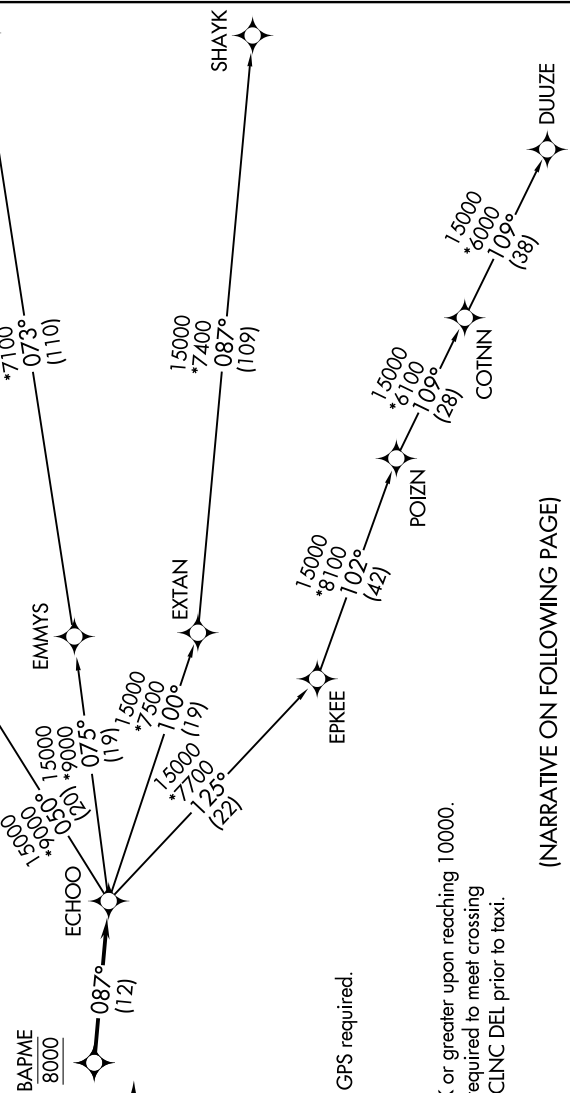
# ECHOO ONE DEPARTURE (RNAV)

SW-1, 15 MAY 2025 to 12 JUN 2025

**TOP ALTITUDE:**  
FL230

TAKEOFF MINIMUMS  
Rwys 8, 17, 26, 35: Standard.

ATIS  
119.025  
CLINC DEL  
124.7  
CLINC DEL  
121.75 (when hwr closed)  
DENVER DEP COIN  
128.25 371.95



- NOTE: DME/DME/IRU or GPS required.
- NOTE: RNAV 1.
- NOTE: Turbojets only.
- NOTE: RADAR required.
- NOTE: Accelerate to 250K or greater upon reaching 10000. If slower speed is required to meet crossing restrictions advise CLINC DEL prior to taxi.

(NARRATIVE ON FOLLOWING PAGE)

NOTE: Chart not to scale.

SW-1, 15 MAY 2025 to 12 JUN 2025

# ECHOO ONE DEPARTURE (RNAV)