

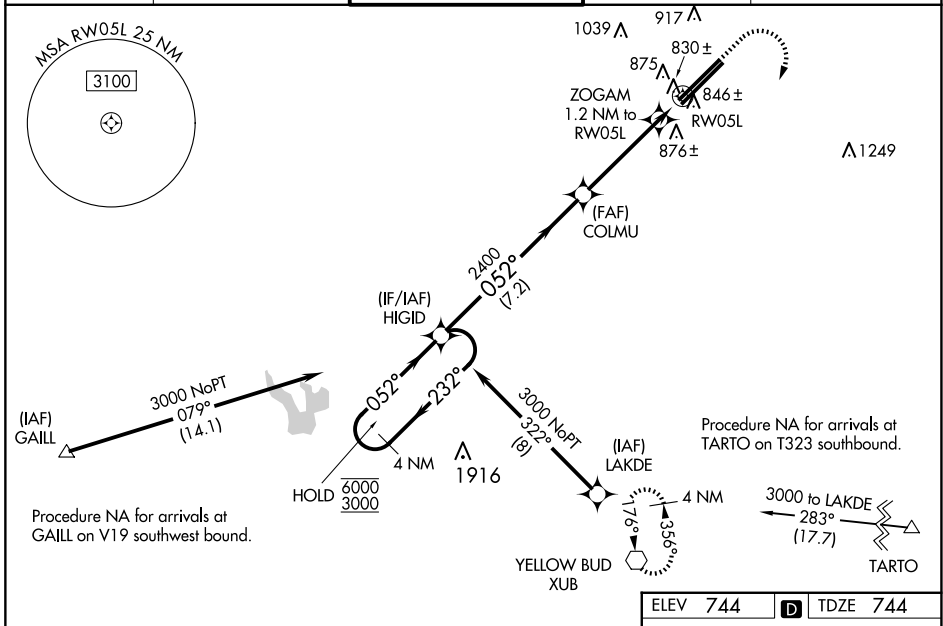
WAAS CH <b>78022</b> <b>W05B</b>	APP CRS <b>052°</b>	Rwy Idg <b>11004</b> TDZE <b>744</b> Apt Elev <b>744</b>
--	------------------------	--

# RNAV (GPS) RWY 5L

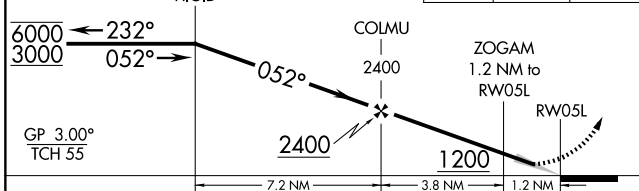
RICKENBACKER INTL (LCK)

RNP APCH - GPS.	MALSR 	MISSED APPROACH: Climb to 1500 then climbing right turn to 3000 direct XUB VOR and hold.
-----------------	-----------	---

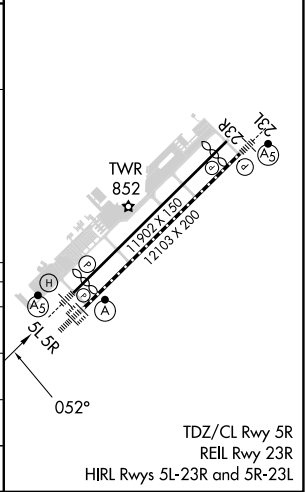
ATIS <b>132.75</b>	COLUMBUS APP CON <b>134.0 279.6</b>	RICK TOWER <b>120.05 348.4</b>	GND CON <b>125.275 275.8</b>	CLNC DEL <b>125.275 275.8</b>
-----------------------	--	-----------------------------------	---------------------------------	----------------------------------



VGSI and RNAV glidepath not coincident (VGSI Angle 3.00/TCH 70).  
4 NM Holding Pattern



CATEGORY	A	B	C	D
LPV DA		944-1/2	200 (200-1/2)	
RNAV/VNAV DA		1007-1/2	263 (300-1/2)	
RNAV MDA	1100-1/2	356 (400-1/2)	1100-5/8	356 (400-5/8)
CIRCLING	1240-1	496 (500-1)	1280-1/2	1400-2
			536 (600-1/2)	656 (700-2)



EC-2, 15 MAY 2025 to 12 JUN 2025

EC-2, 15 MAY 2025 to 12 JUN 2025