

WAAS CH 78421 W23B	APP CRS 232°	Rwy Idg TDZE 743 Apt Elev 744	10913
--	------------------------	---	--------------

RNAV (GPS) RWY 23R

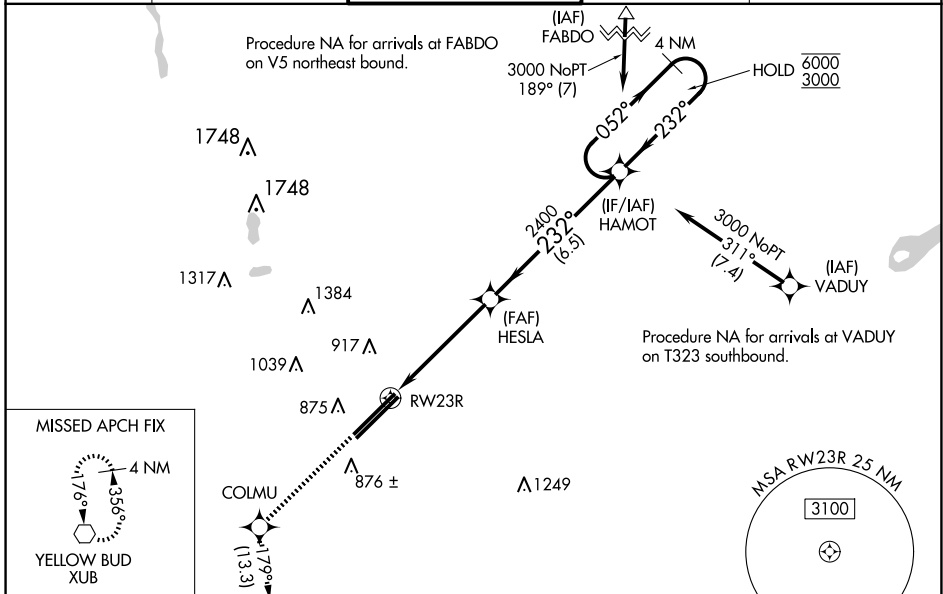
RICKENBACKER INTL (LCK)

RNP APCH - GPS.

⚠ Circling NA northwest of Rwy 5L-23R. For uncompensated Baro-VNAV systems, LNAV/VNAV NA below -16°C or above 54°C. Baro-VNAV and VDP NA when using John Glenn Columbus Intl altimeter setting. When local altimeter setting not received, use John Glenn Columbus Intl altimeter setting: increase LPV DA to 978 feet; increase LNAV/VNAV DA to 1041 feet and all visibilities to 1 SM; increase all MDAs 40 feet and Circling Cat D visibility ¼ SM.

MISSED APPROACH: Climb to 3000 direct COLMU and on track 179° to XUB VOR and hold.

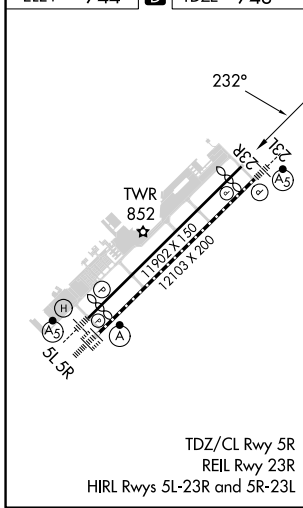
ATIS 132.75	COLUMBUS APP CON 134.0 279.6	RICK TOWER 120.05 348.4	GND CON 125.275 275.8	CLNC DEL 125.275 275.8
-----------------------	--	-----------------------------------	---------------------------------	----------------------------------



EC-2, 15 MAY 2025 to 12 JUN 2025

EC-2, 15 MAY 2025 to 12 JUN 2025

ELEV 744	D	TDZE 743
-----------------	----------	-----------------



3000	COLMU	XUB	VGSI and RNAV glidepath not coincident (VGSI Angle 3.00/TCH 79).
↑	✦	⬡	4 NM Holding Pattern
	HESLA	HAMOT	
	2400	2400	
	1.3 NM to RWY 23R		

CATEGORY	A	B	C	D
LPV DA		943-¾	200 (200-¾)	
LNAV/VNAV DA		1006-⅞	263 (300-⅞)	
LNAV MDA	1220-1	477 (500-1)	1220-1⅓	477 (500-1⅓)
CIRCLING	1240-1	496 (500-1)	1280-1½	1400-2
			536 (600-1½)	656 (700-2)