


WAAS CH 62811 W23A	APP CRS 232°	Rwy Idg 12103 TDZE 740 Apt Elev 744
--	------------------------	--

RNAV (GPS) RWY 23L

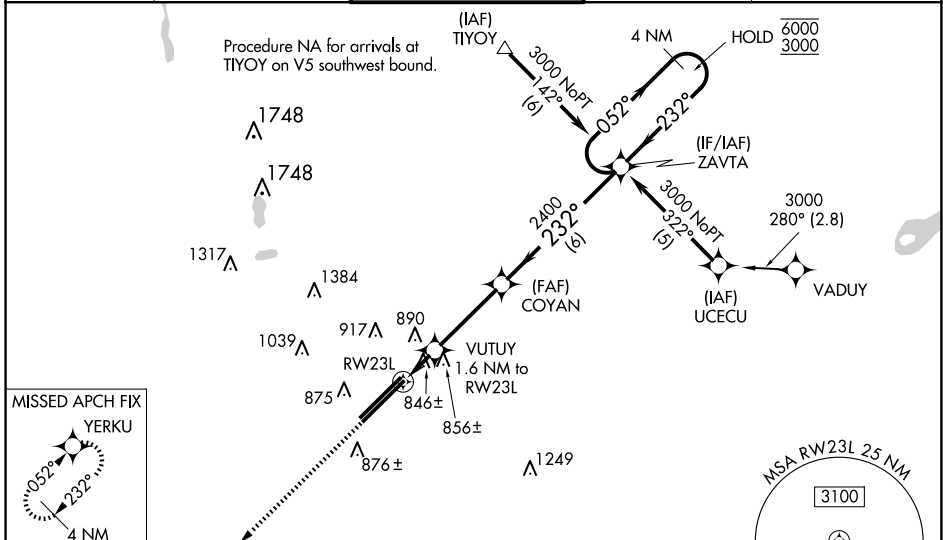
RICKENBACKER INTL (LCK)

RNP APCH - GPS.

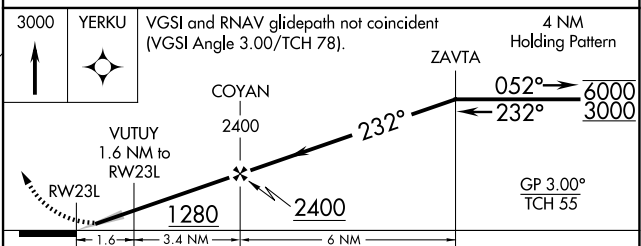
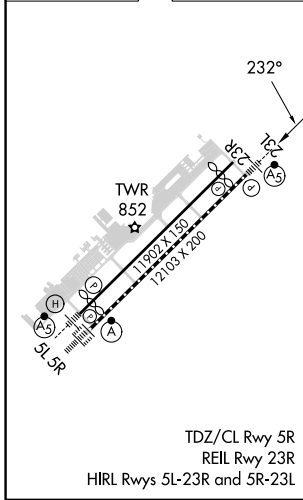
⚠ For uncompensated Baro-VNAV systems, LNAV/VNAV NA below -16°C or above 54°C. Circling NA northwest of Rwy 5L-23R. Baro-VNAV NA when using John Glenn Columbus Intl altimeter setting. When local altimeter setting not received, use John Glenn Columbus Intl altimeter setting: increase LPV DA to 975 feet; increase LNAV/VNAV DA to 1157 feet and all visibilities to RVR 4000; increase all MDAs 40 feet and LNAV visibility Cats C/D to RVR 5000 and Circling Cat D to 2 1/4 SM.
* RVR 1800 authorized with use of FD or AP or HUD to DA, (NA when using John Glenn Columbus Intl altimeter setting).

MALSRL

MISSED APPROACH:
 Climb to 3000 direct YERKU and hold.

ATIS 132.75	COLUMBUS APP CON 134.0 279.6	RICK TOWER 120.05 348.4	GND CON 125.275 275.8	CLNC DEL 125.275 275.8
-----------------------	--	-----------------------------------	---------------------------------	----------------------------------



ELEV 744	D	TDZE 740
-----------------	----------	-----------------



CATEGORY	A	B	C	D
LPV DA *		940/24	200 (200-1/2)	
LNAV/VNAV DA		1122/35	382 (400-3/4)	
LNAV MDA	1180/24	440 (500-1/2)	1180/40	440 (500-3/4)
CIRCLING	1240-1	496 (500-1)	1280-1 1/2 536 (600-1 1/2)	1400-2 656 (700-2)

EC-2, 15 MAY 2025 to 12 JUN 2025

EC-2, 15 MAY 2025 to 12 JUN 2025