

LOC I-LCK 110.1	APP CRS 232°	Rwy Idg	23L	23R
		TDZE	740	743
		Apt Elev	744	744

ILS or LOC RWY 23L

RICKENBACKER INTL (LCK)

⚠ Circling NA northwest of Rwy 5L-23R. When local altimeter setting not received, use John Glenn Columbus Intl altimeter setting: increase DA to 975 feet; increase all MDAs 40 feet and S-LOC 23L visibility Cats C/D to RVR 5500 and Circling visibility Cat D to 2 1/4 SM. Autopilot coupled approach NA below 1000 MSL.



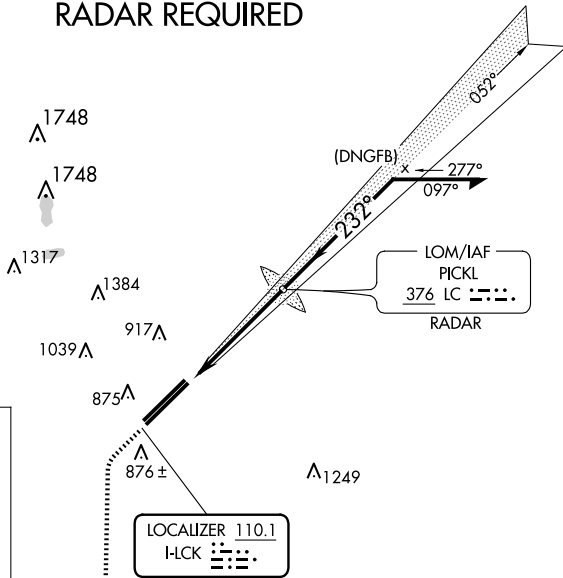
MISSED APPROACH: Climb to 3000, then left turn direct XUB VOR and hold.

ATIS 132.75	COLUMBUS APP CON 134.0 279.6	RICK TOWER 120.05 348.4	GND CON 125.275 275.8	CLNC DEL 125.275 275.8
-----------------------	--	-----------------------------------	---------------------------------	----------------------------------

ALTERNATE MISSED APCH FIX

PICKL
376 LC

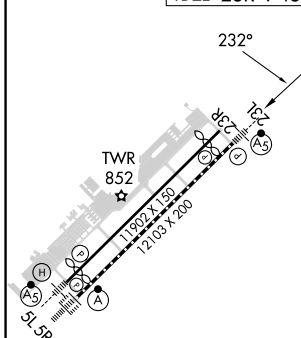
RADAR REQUIRED



MISSED APCH FIX

YELLOW BUD
XUB
112.5

ELEV 744	TDZE 23L 740
	TDZE 23R 743



3000

XUB

LC LOM RADAR

Remain within 10 NM

VGSI and ILS glidepath not coincident (VGSI Angle 3.00/TCH 78).

GS 3.00°
TCH 62

4.9 NM

CATEGORY	A	B	C	D
S-ILS 23L	940/24 200 (200-1/2)			
S-LOC 23L	1 220/24	480 (500-1/2)	1 220/50	480 (500-1)
SIDESTEP RWY 23R	1 220-1	477 (500-1)	1 220-1 1/2	1 220-2
CIRCLING	1 240-1	496 (500-1)	1 280-1 1/2	1 400-2
			536 (600-1 1/2)	656 (700-2)

TDZ/CL Rwy 5R
REIL Rwy 23R
HIRL Rws 5L-23R and 5R-23L

FAF to MAP 4.9 NM

Knots	60	90	120	150	180
Min:Sec	4:54	3:16	2:27	1:58	1:38

EC-2, 15 MAY 2025 to 12 JUN 2025

EC-2, 15 MAY 2025 to 12 JUN 2025