

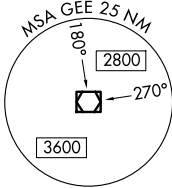
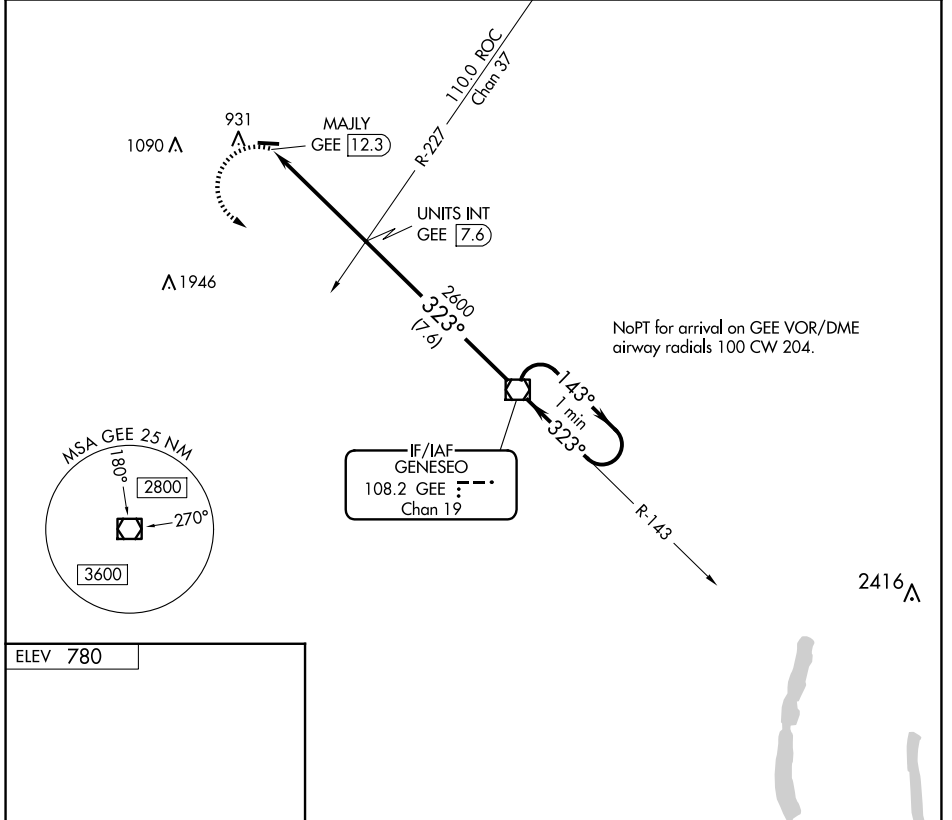
VOR/DME GEE 108.2 Chan 19	APP CRS 323°	Rwy Idg TDZE Apt Elev N/A N/A 780
---	------------------------	---

VOR-A
LE ROY (5Gθ)

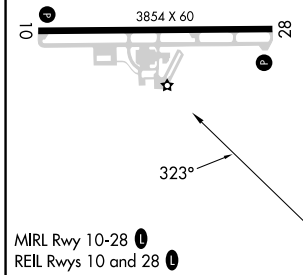
⚠ NA Use Frederick Douglass/Greater Rochester Intl altimeter setting. Circling Rwy 10 NA at night. When Circling to Rwy 28 at night, operational VGSI required, remain on or above VGSI glidepath until threshold.

MISSED APPROACH: Climbing left turn to 4000 direct GEE VOR/DME and hold.

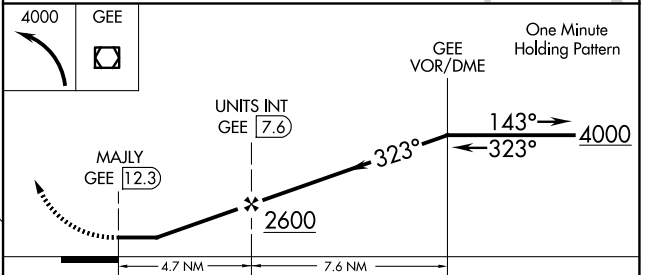
ROC ASOS 124,825	ROCHESTER APP CON 123.7 322.3	UNICOM 122.8 (CTAF)
----------------------------	---	-------------------------------



IF/IAF
GENESECO
108.2 GEE
Chan 19



ELEV 780					
MIRL Rwy 10-28					
REIL Rwys 10 and 28					
FAF to MAP 4.7 NM					
Knots	60	90	120	150	180
Min:Sec	4:42	3:08	2:21	1:53	1:34



CATEGORY	A	B	C	D
CIRCLING	1440-1	660 (700-1)	NA	

NE-2, 15 MAY 2025 to 12 JUN 2025

NE-2, 15 MAY 2025 to 12 JUN 2025