

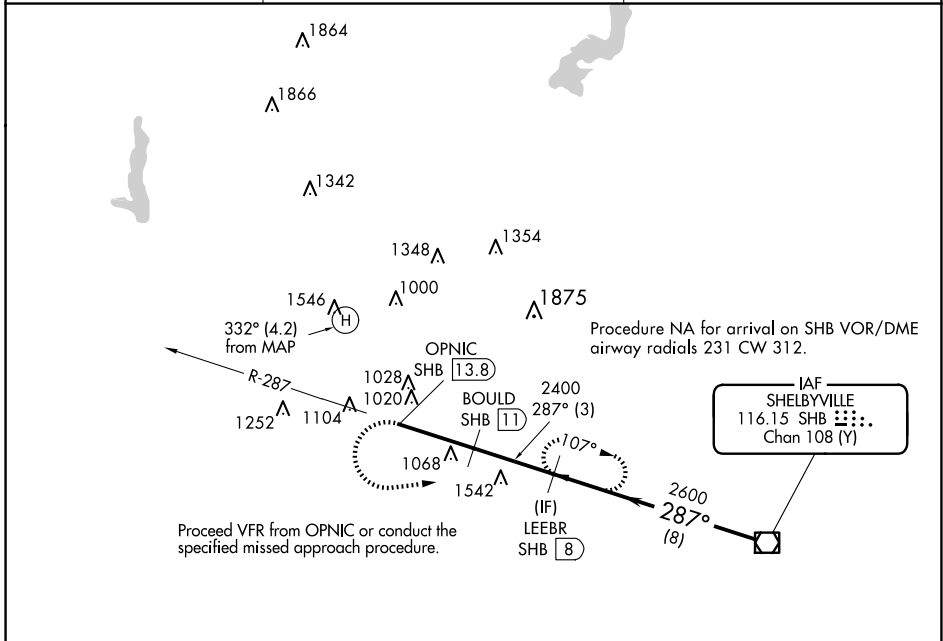
VOR/DME SHB 116.15 Chan 108 (Y)	APP CRS 287°	Rwy Idg Sfc Elev 824 Apt Elev 732	N/A
---	------------------------	---	-----

COPTER VOR/DME 287°

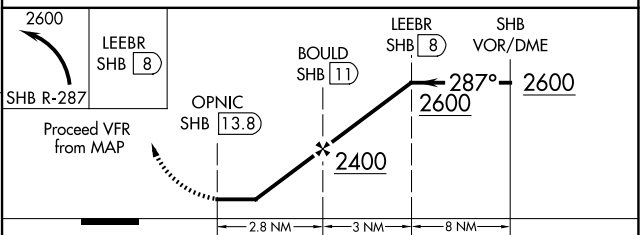
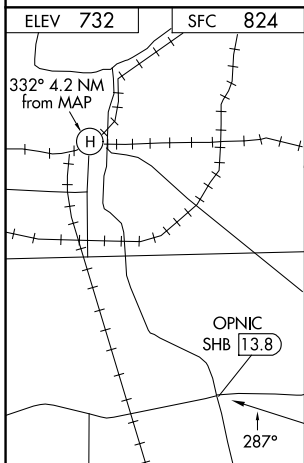
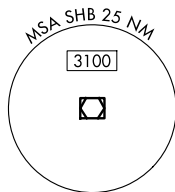
INDIANAPOLIS DOWNTOWN (8A.4)

<p>▲ NA When local altimeter setting not received, use Indianapolis Intl altimeter setting and increase MDA 40 feet. Activate High Intensity Pad Lights-CTAF.</p>	<p>MISSED APPROACH: Climbing left turn to 2600 via SHB R-287 to LEEBR/SHB 8 DME and hold.</p>
--	--

AWOS-3 135.525	INDIANAPOLIS APP CON 125.275 317.8	UNICOM 123.05 (CTAF) 0
--------------------------	--	----------------------------------



CAUTION: Heliport located in area of numerous lighted and unlighted obstructions.



CATEGORY	COPTER
H-287°	1340-¾ 516 (600-¾)

EC-2, 15 MAY 2025 to 12 JUN 2025

EC-2, 15 MAY 2025 to 12 JUN 2025