

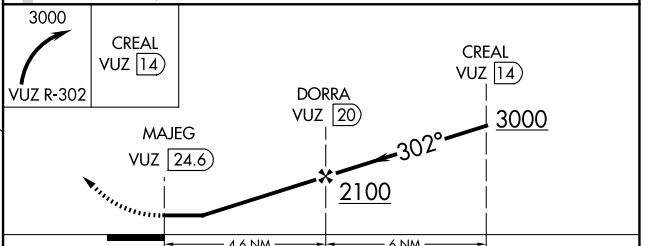
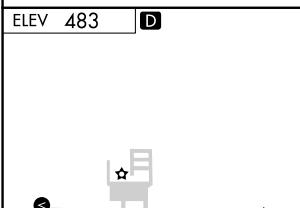
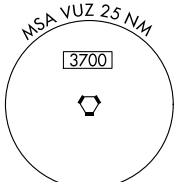
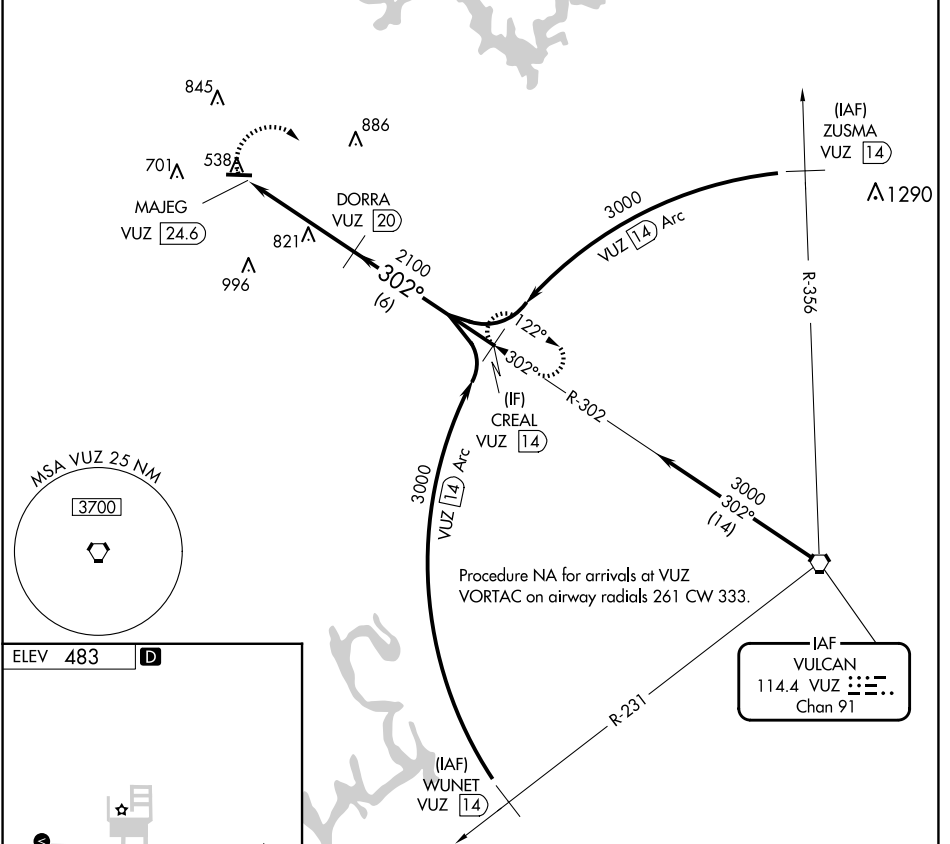
VORTAC VUZ <b>114.4</b> Chan <b>91</b>	APP CRS <b>302°</b>	Rwy Idg TDZE Apt Elev	<b>N/A</b> <b>N/A</b> <b>483</b>
--	------------------------	-----------------------------	--

**VOR/DME-A**  
WALKER COUNTY/BEVILL FLD (JF'X)

**⚠** When local altimeter setting not received, use Birmingham altimeter setting and increase all MDA 120 feet and Cat C/D visibility ¼ mile.

**MISSED APPROACH:** Climbing right turn to 3000 on VUZ VORTAC R-302 to CREAL/14 DME and hold.

AWOS-3PT <b>119.225</b>	BIRMINGHAM APP CON <b>127.675 338.2</b>	GCO <b>121.725</b>	UNICOM <b>123.075</b> (CTAF) <b>📻</b>
----------------------------	--	-----------------------	--



CATEGORY	A	B	C	D
CIRCLING	1160-1 677 (700-1)	1160-1¼ 677 (700-1¼)	1160-2 677 (700-2)	1360-2¾ 877 (900-2¾)

SE-4, 15 MAY 2025 to 12 JUN 2025

SE-4, 15 MAY 2025 to 12 JUN 2025